

TruePoint
Laser Scanning

Capture. Analyze. Define.

The Technology

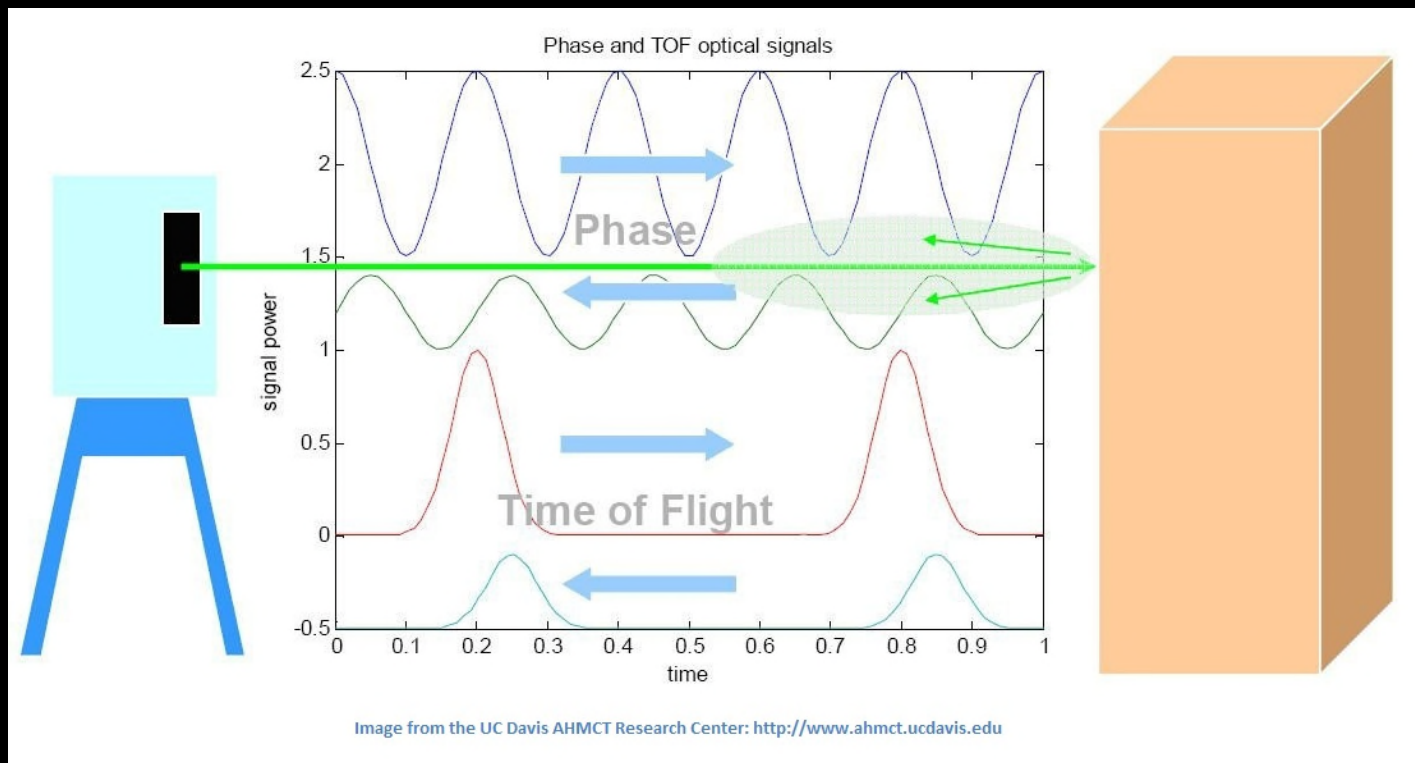
Benefits of laser scanning

- | | |
|-----------------|--|
| Fast: | Collects millions of data points per minute |
| Accurate: | Scan data is extremely accurate due to the amount of data collected |
| Safe: | Non-contact measurement tool used from the ground and away from hazards |
| Cost-effective: | Able to collect more valuable data in less time, with little or no re-visits creating greater cost savings |

The Technology

Two type of 3D laser scanners

- © LIDAR (Laser Imaging, Detection & Ranging)
- © Phase-based



The Equipment

Leica C-10 ScanStation

- © Uses LIDAR
- © Fast – Scans 50,000 data points/second
- © Accurate – to within 2mm-4mm up to 300m
- © Limited to Line of Sight
- © Capable of taking photographs
- © Able to be used in wide range of applications



The Equipment

Leica P-20 ScanStation

- © Uses LIDAR & Phase-based
- © Fast – Scans 1,000,000 data points/second
- © Accurate – to within 2mm-4mm up to 120m
- © Limited to Line of Sight
- © Capable of taking photographs
- © Able to be used in wide range of applications



Equipment Applications

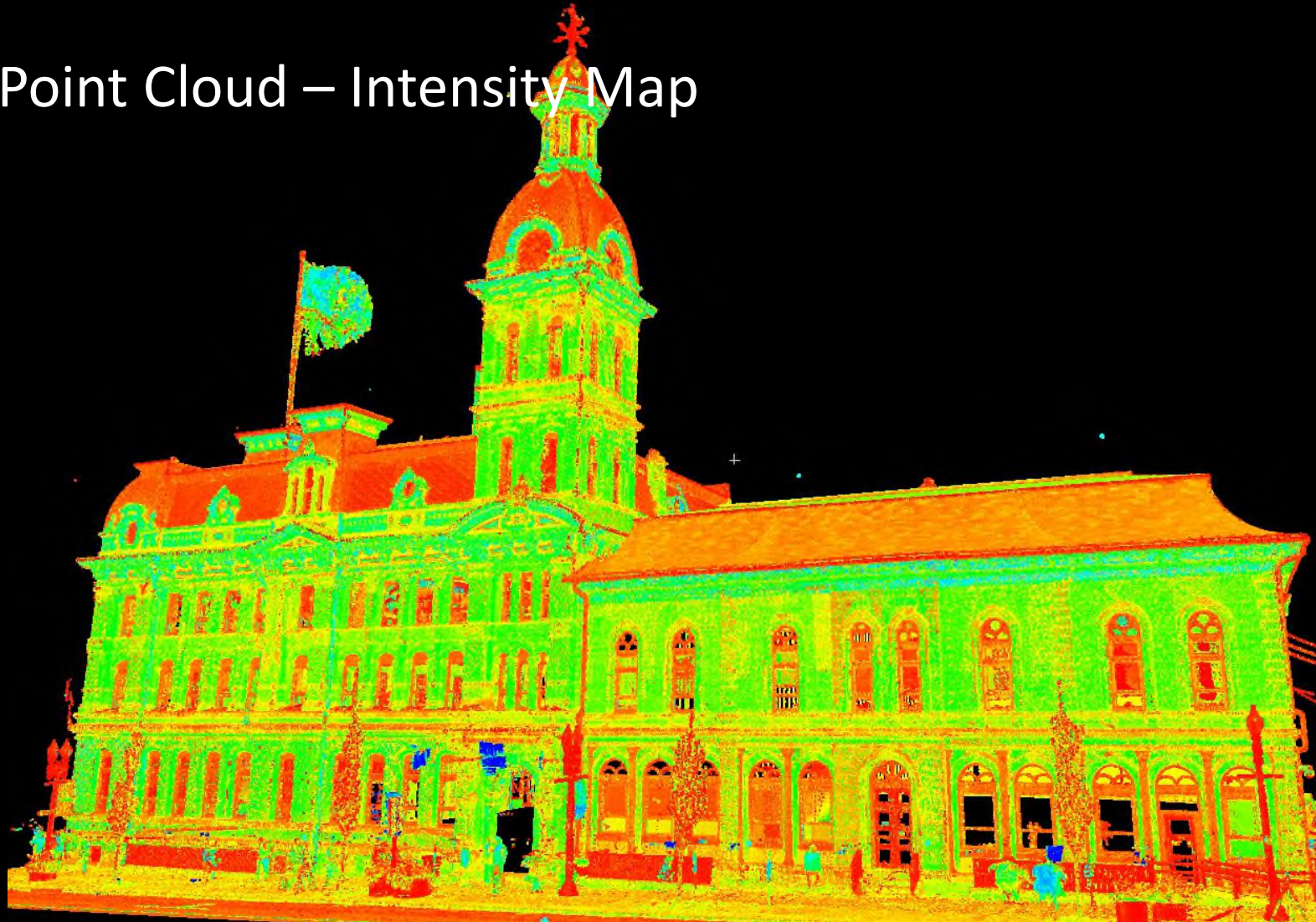
- © “As-builts”
- © New construction “verifications”
- © Prefabrication
- © Clash Detection
- © Historical Preservation
- © Overhead Clearance Verification
- © Volume Calculations
- © Telecommunication & Transmission Towers

Deliverables

- © Point Cloud data – Raw Data
- © TruView – Free viewer w/ photos overlaid on point cloud
- © “Fly-thru’s” – 3D virtual tour of point cloud or model
- © 2D & 3D CAD drawings
- © 3D BIM models
- © Other customizable options upon request

Deliverables

Point Cloud – Intensity Map



Deliverables

TruView - Photo documentation from Scanner



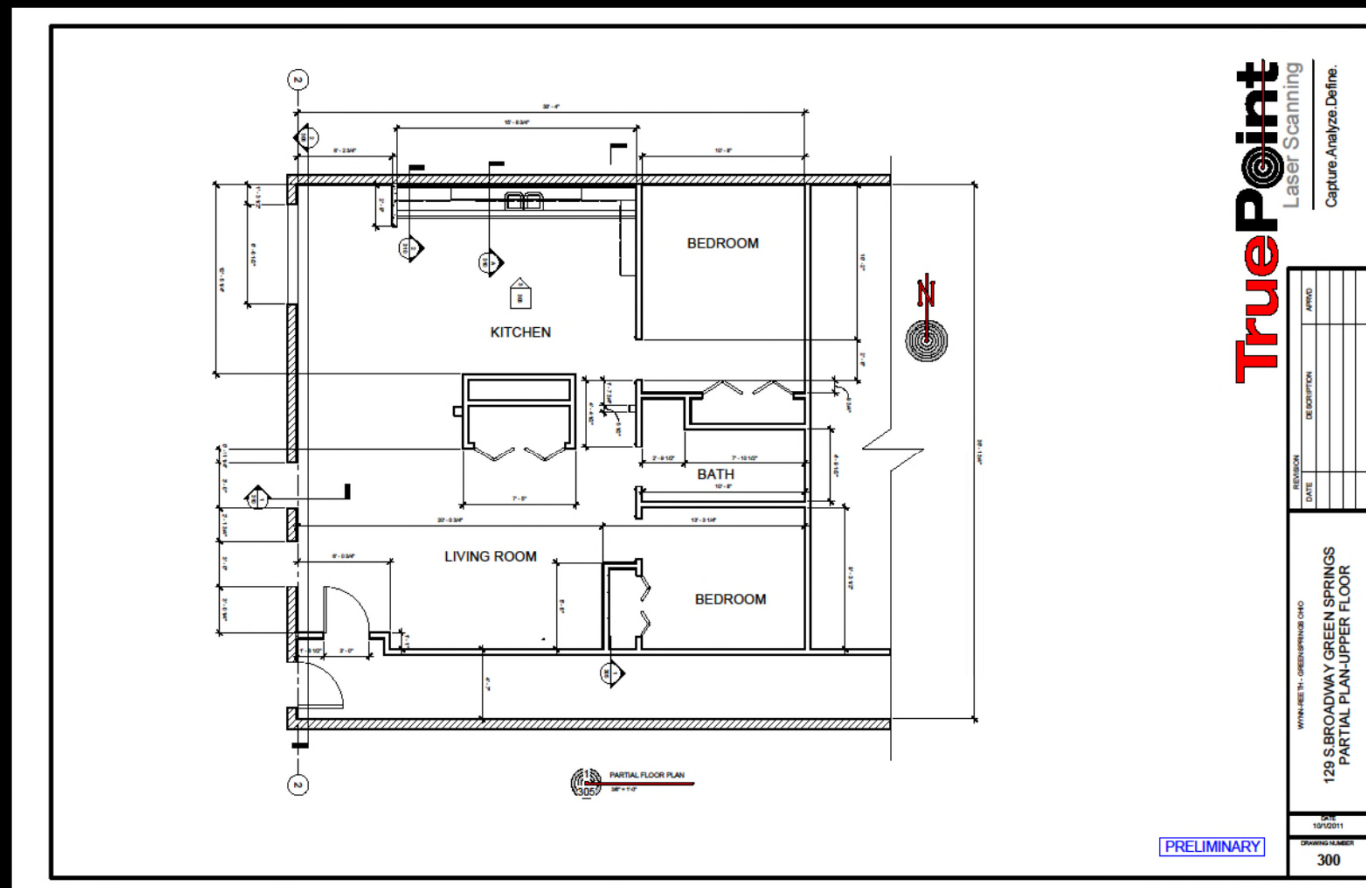
Deliverables

Point Cloud – Colorized Point Cloud



Deliverables

2D Drawings & Floor Plans



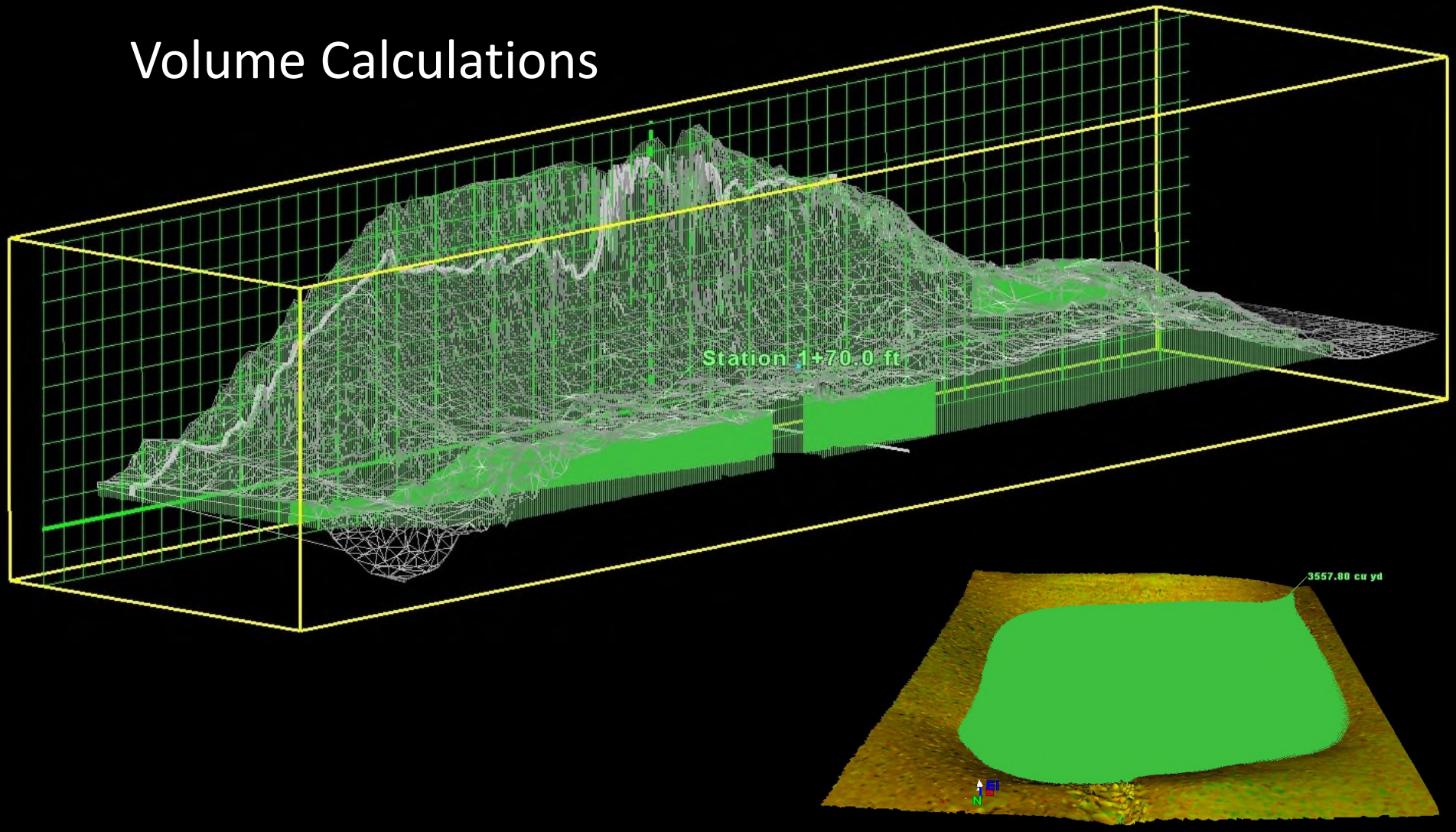
TruePoint
Laser Scanning
Capturing Reality to Define the Future

Resnais Cathedral Toledo
South-Left Elevation

PRELIMINARY
A104

Applications - Measurements

Volume Calculations

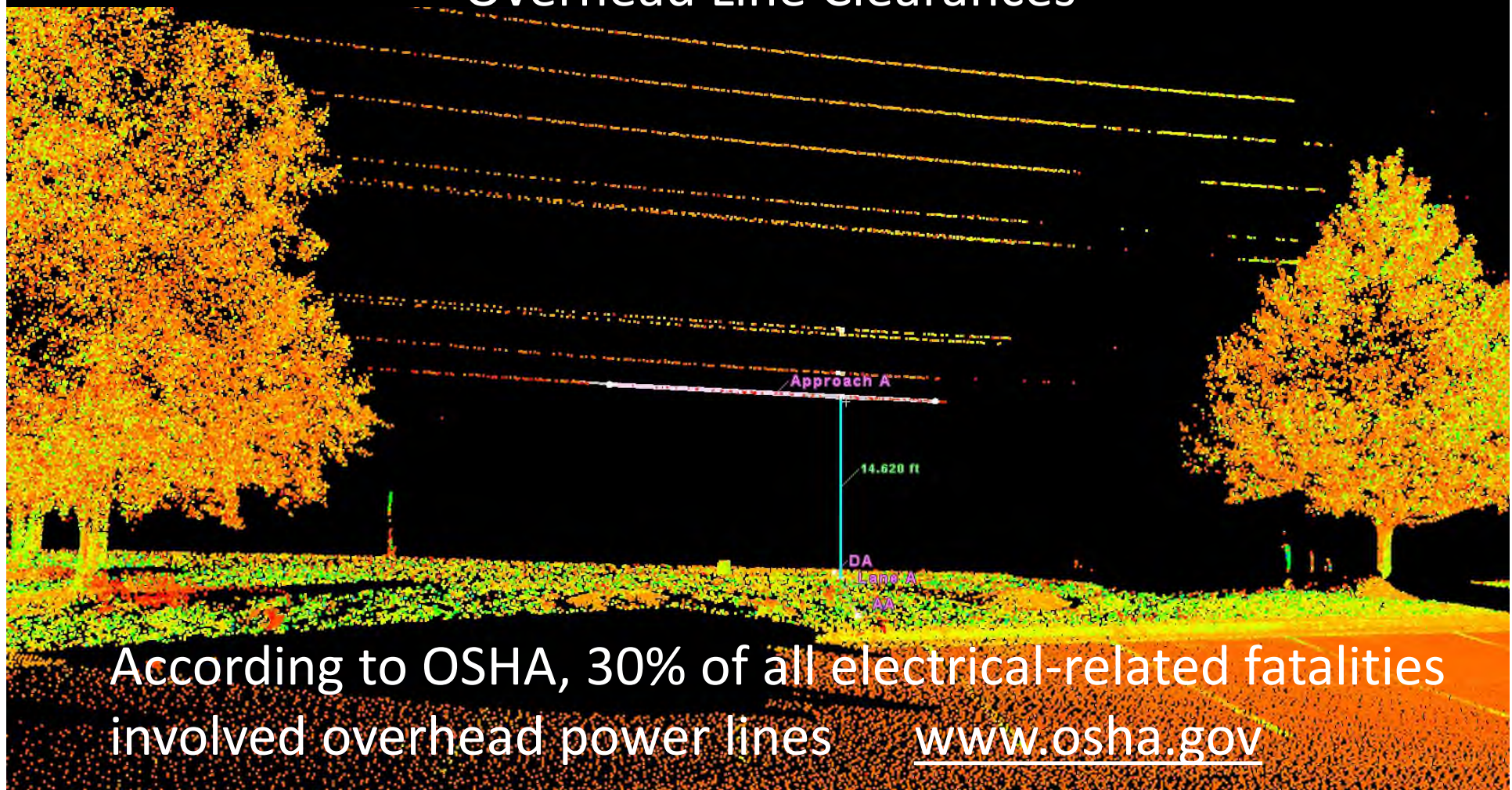


Volume Calculations

[illegible]

Applications - Measurements

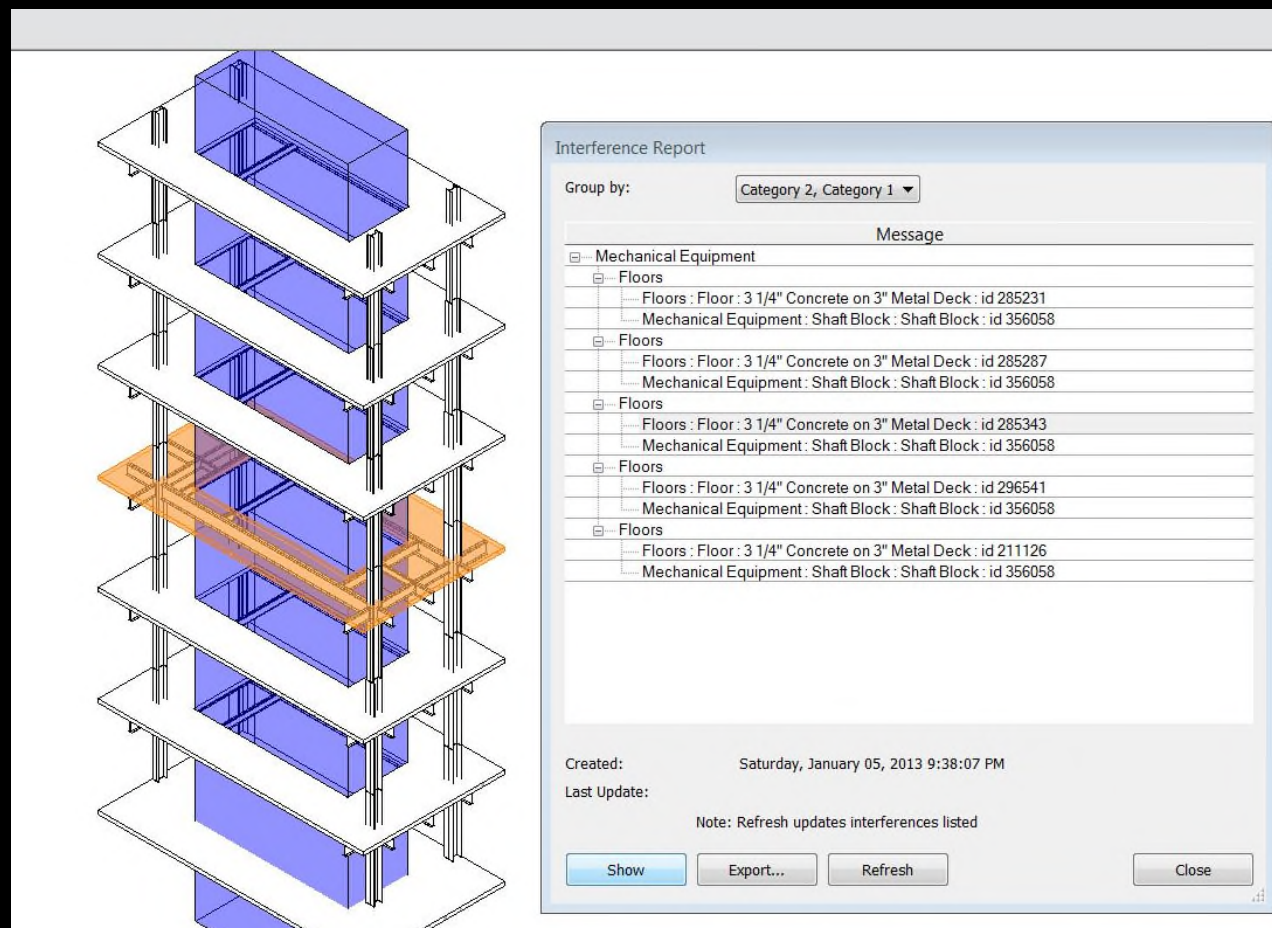
Overhead Line Clearances



According to OSHA, 30% of all electrical-related fatalities involved overhead power lines www.osha.gov

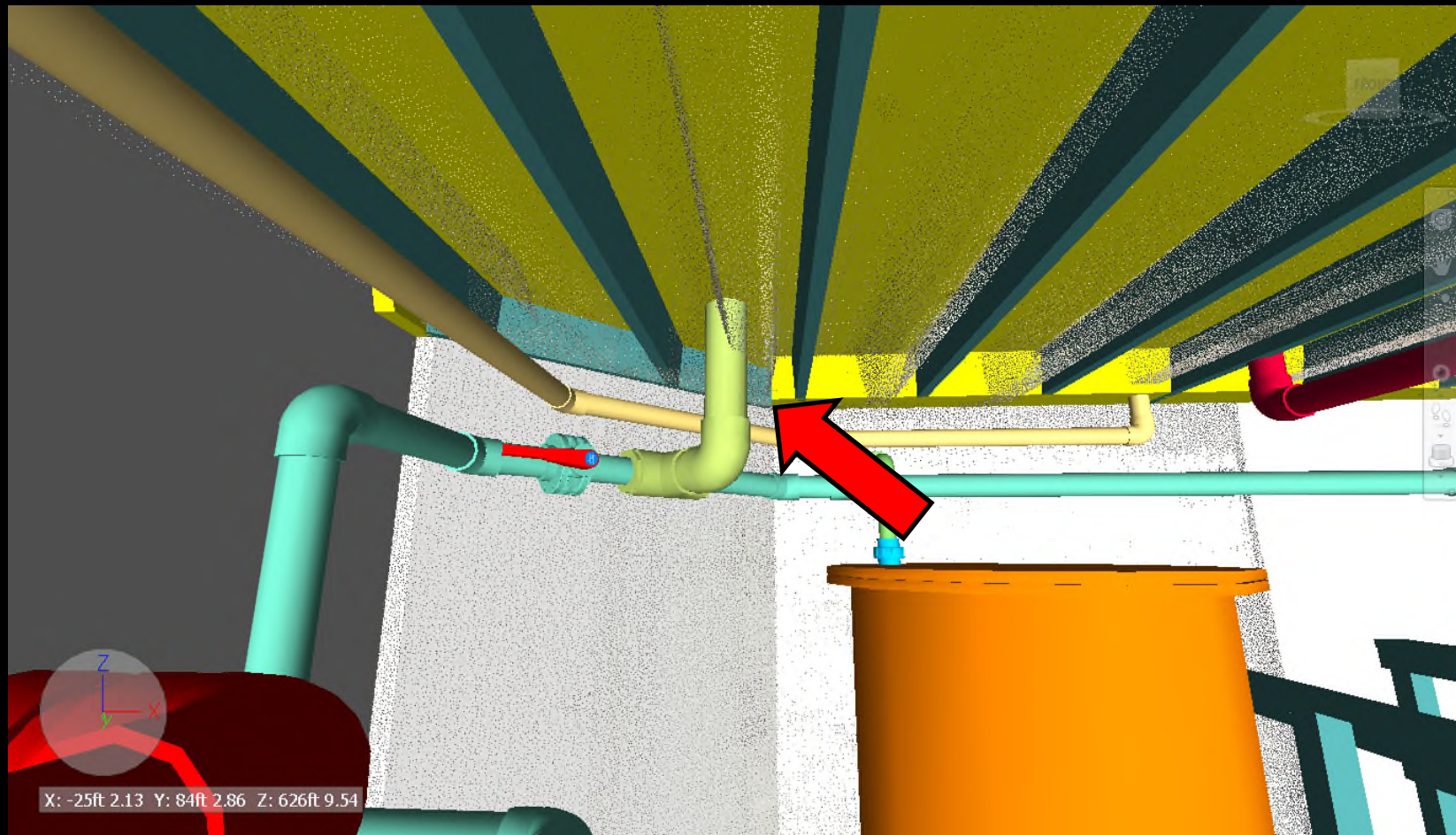
Applications

Clash Detection



Applications

Clash Detection



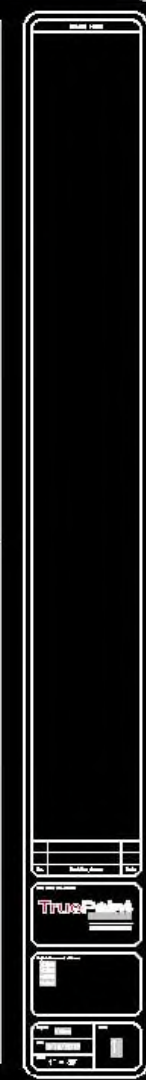
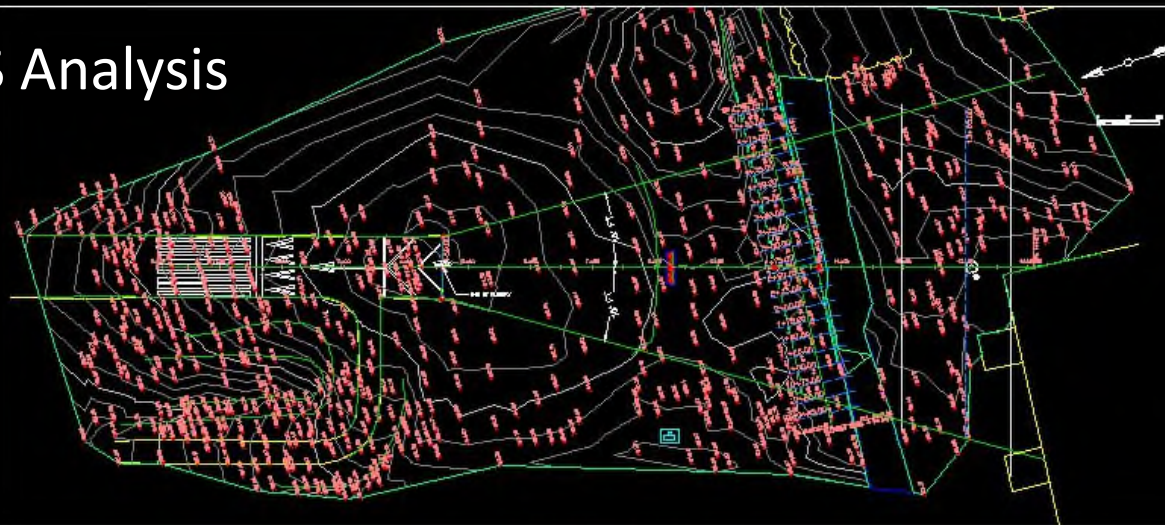
Applications

Contours of Floor Surfaces



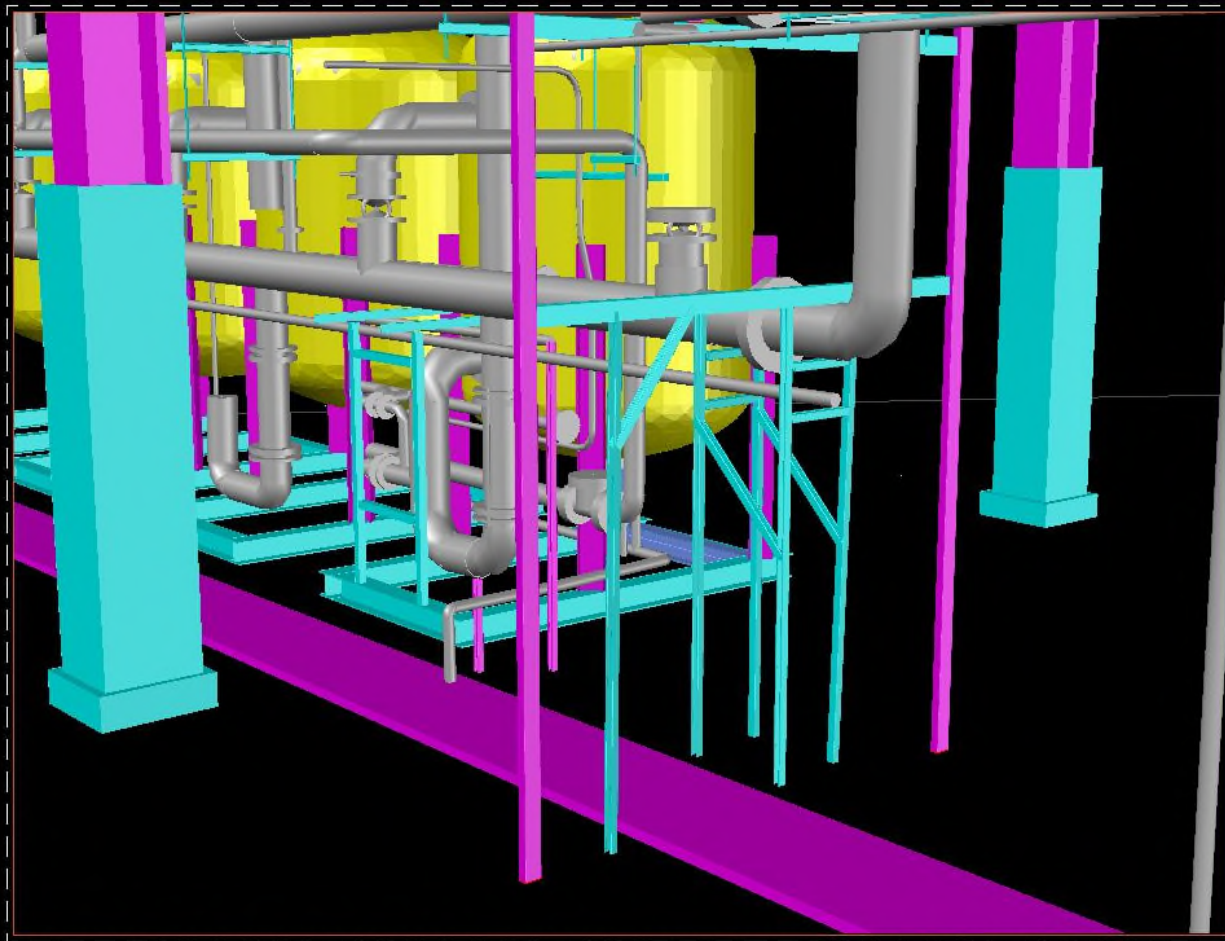
Deliverables

TERPS Analysis



Deliverables

Going from point cloud to model



Deliverables: From Scan to Model

Prep and Referencing the Point Cloud

- © A raw cloud format file is created and exported from the laser scanning software.
- © This raw cloud file is “indexed” (by Recap, AutoCAD or Revit) into a file to be used as an external reference.
 - © Indexing file times vary with raw file size.
 - © 7.5 gigabyte over 2 hours to index.
 - © Some clouds index over a weekend.

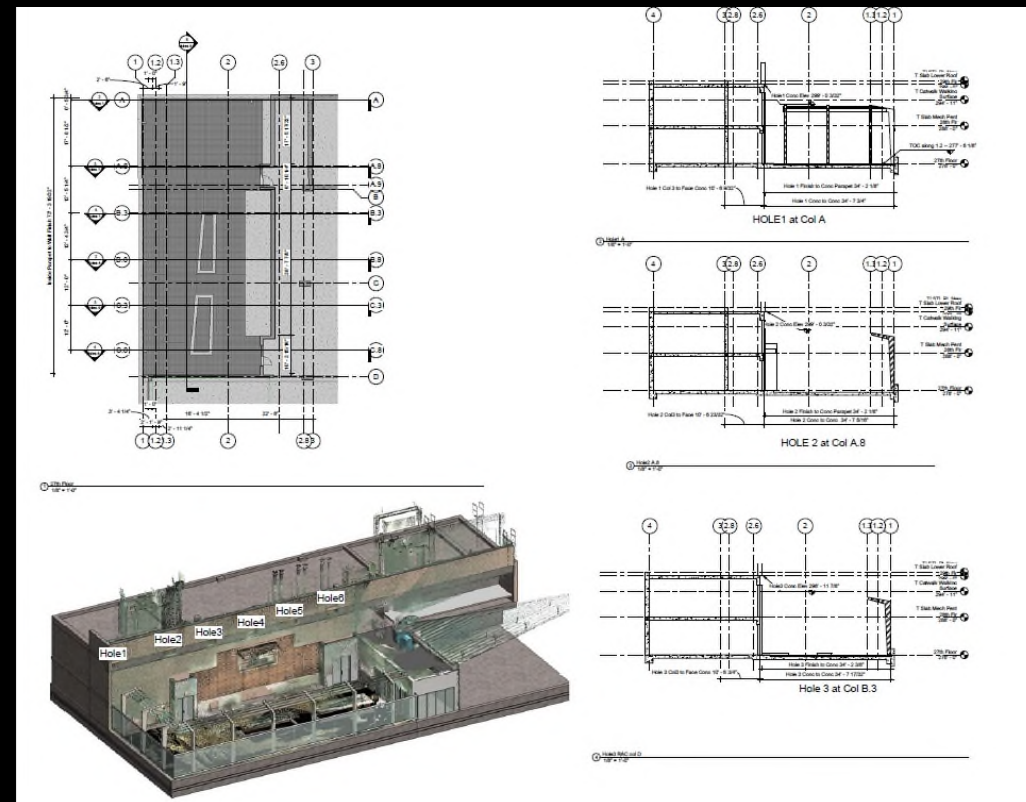
Deliverables: From Scan to Model

Steps to create design documents

- © Index Raw Point Cloud File(s).
- © Point Cloud is attached to design file.
- © Scale and units are verified.
- © Clip cloud to area of interest.
- © Trace cloud (2D or 3D)

Deliverables

Using the point cloud, drawings and plans were created using highly accurate as-builts, avoiding costly mistakes and reducing planning phase by an estimated 3 weeks.



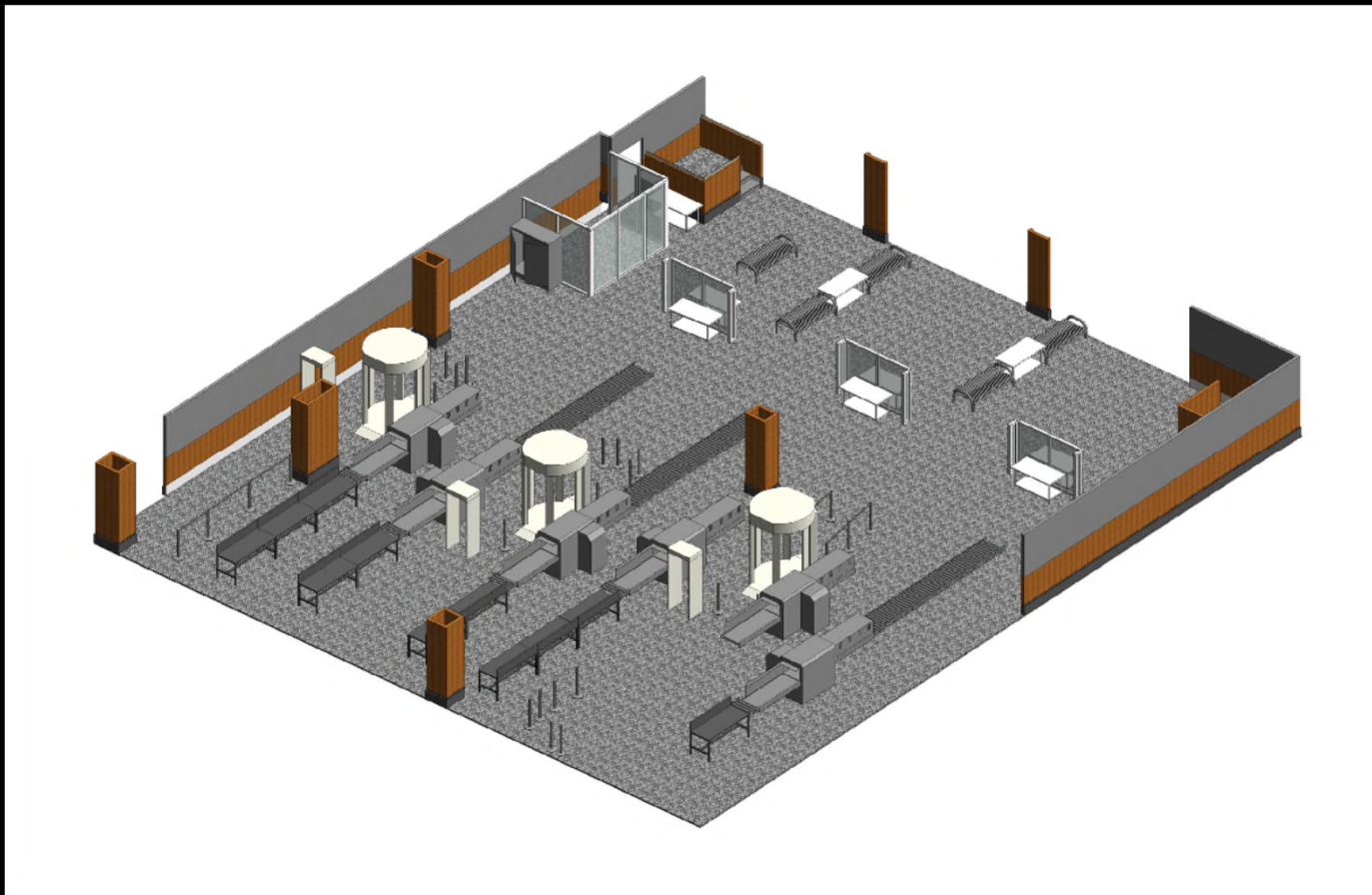
Deliverables

Fly-thru of Hotel model



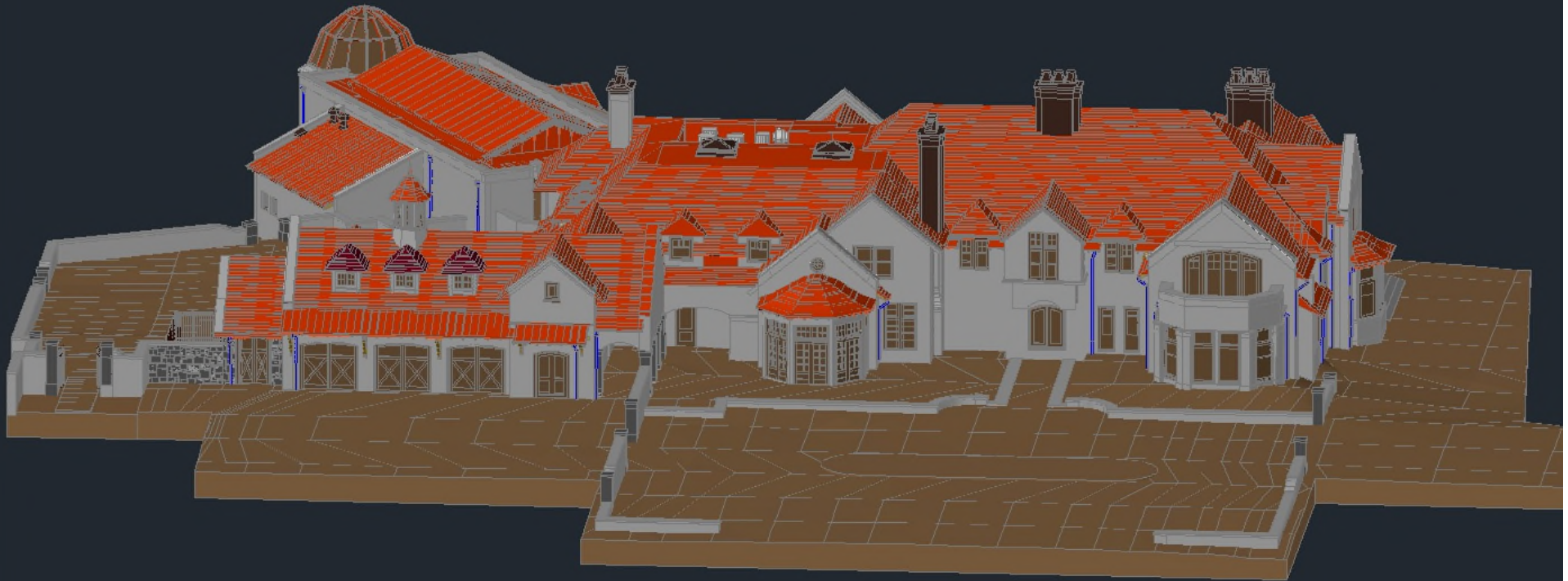
Deliverables

Revit Model of Airport TSA Security Checkpoints



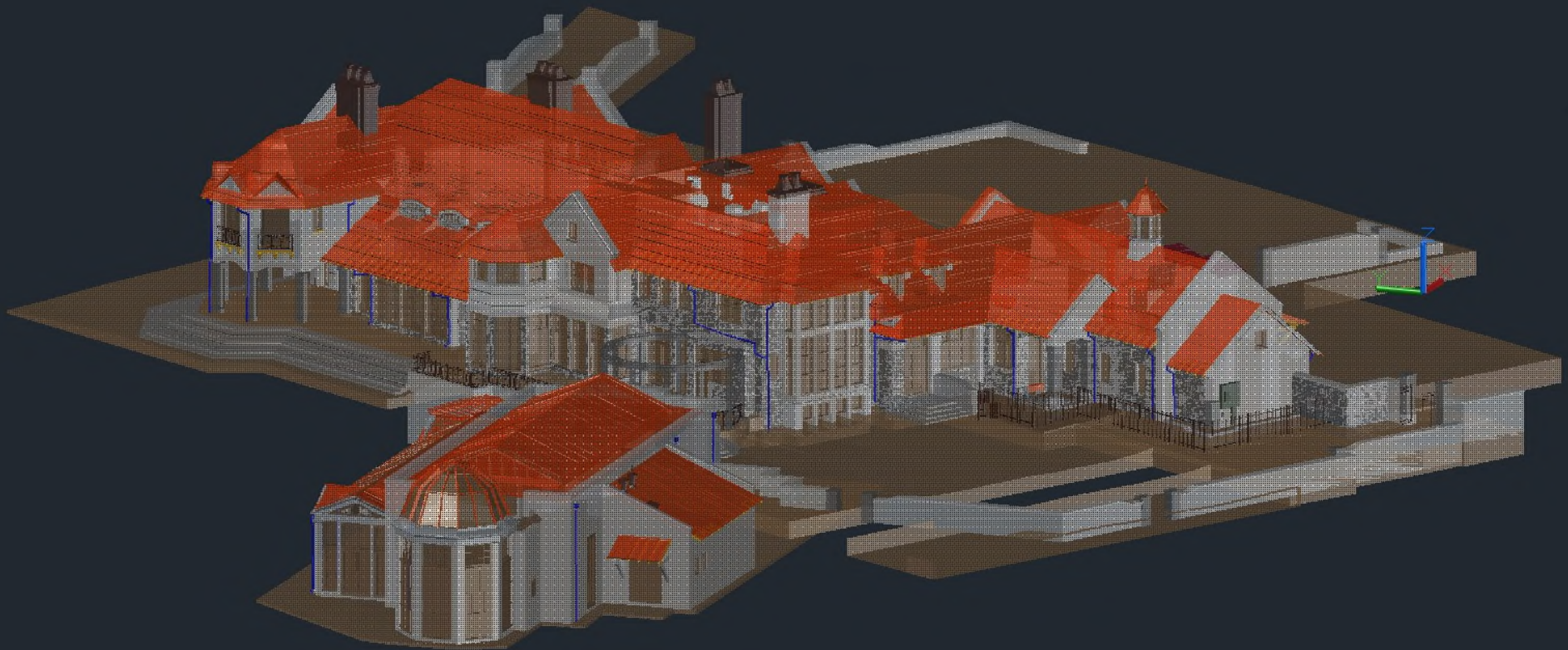
Deliverables

3D CAD Model – Front View of Residence



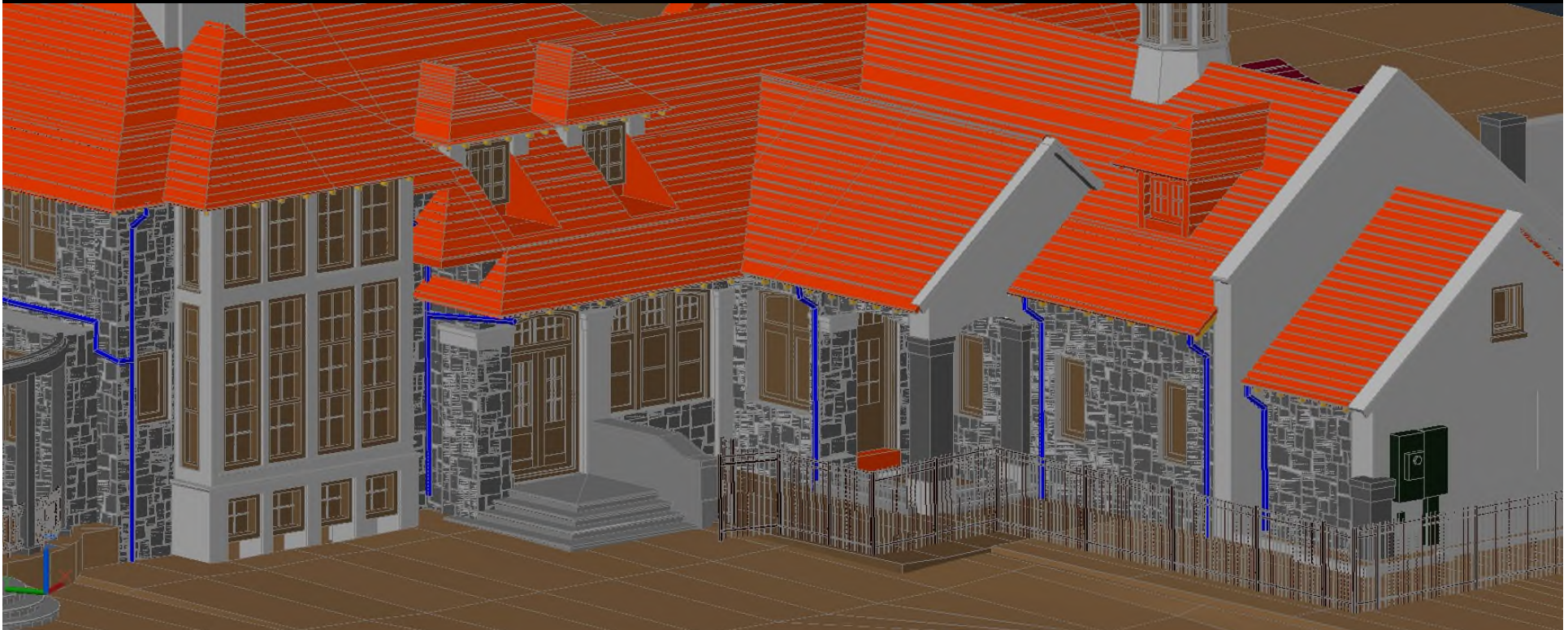
Deliverables

3D CAD Model – Back View of Residence



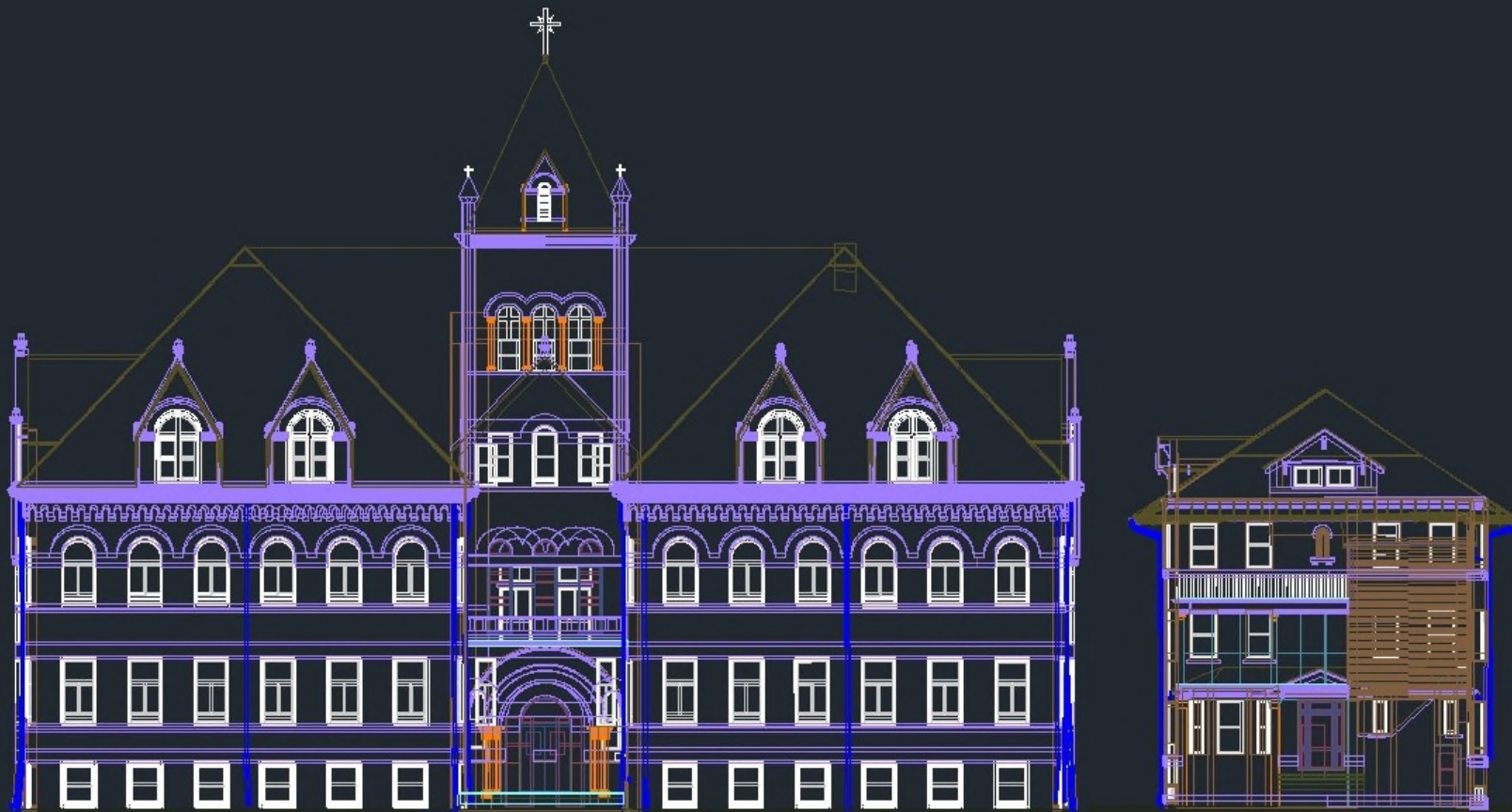
Deliverables

3D CAD Model – Masonry Detail of Residence



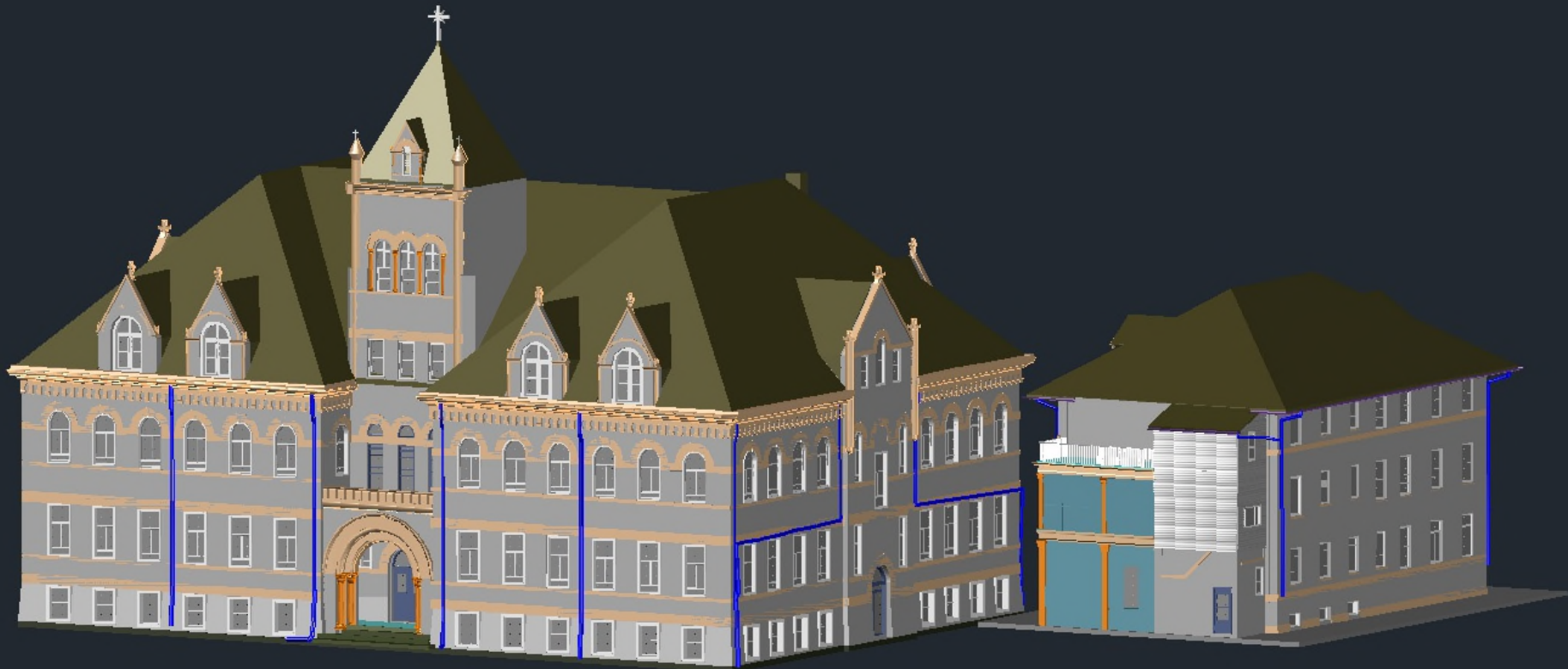
Deliverables

3D Wireframe of Exterior of Church



Deliverables

3D Axonometric View of Church



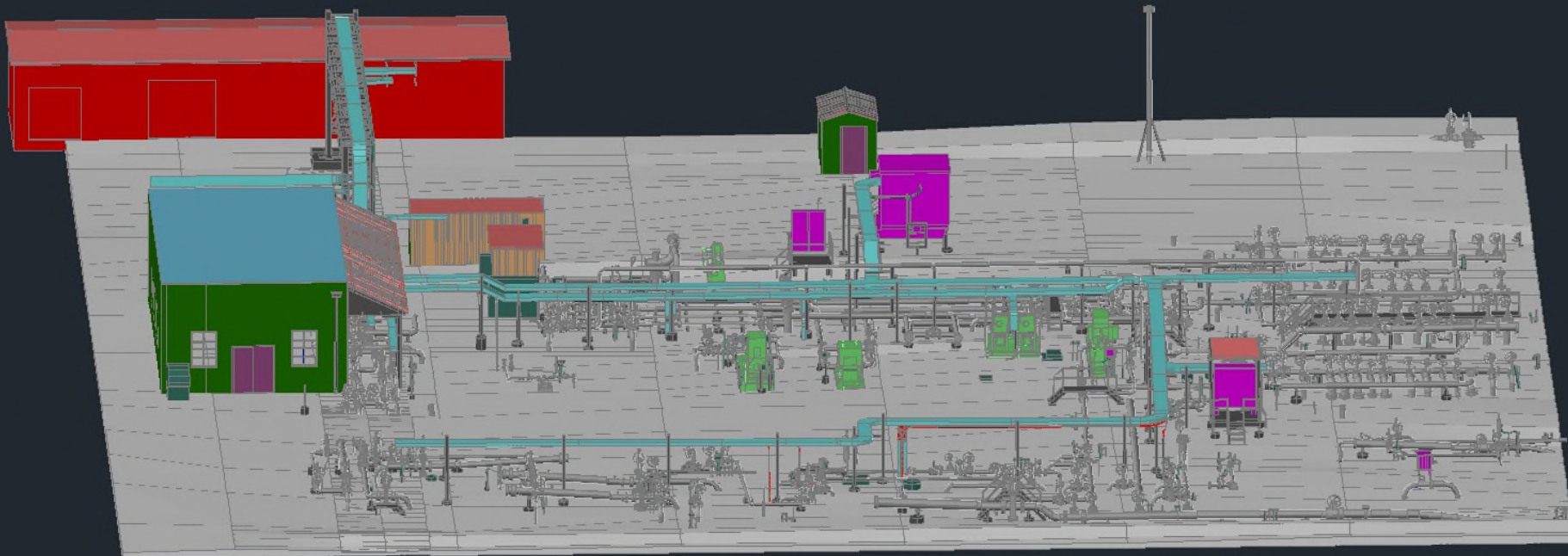
Deliverables

Key Plan with Google Maps overlay



Deliverables

3D CAD Model - Overview



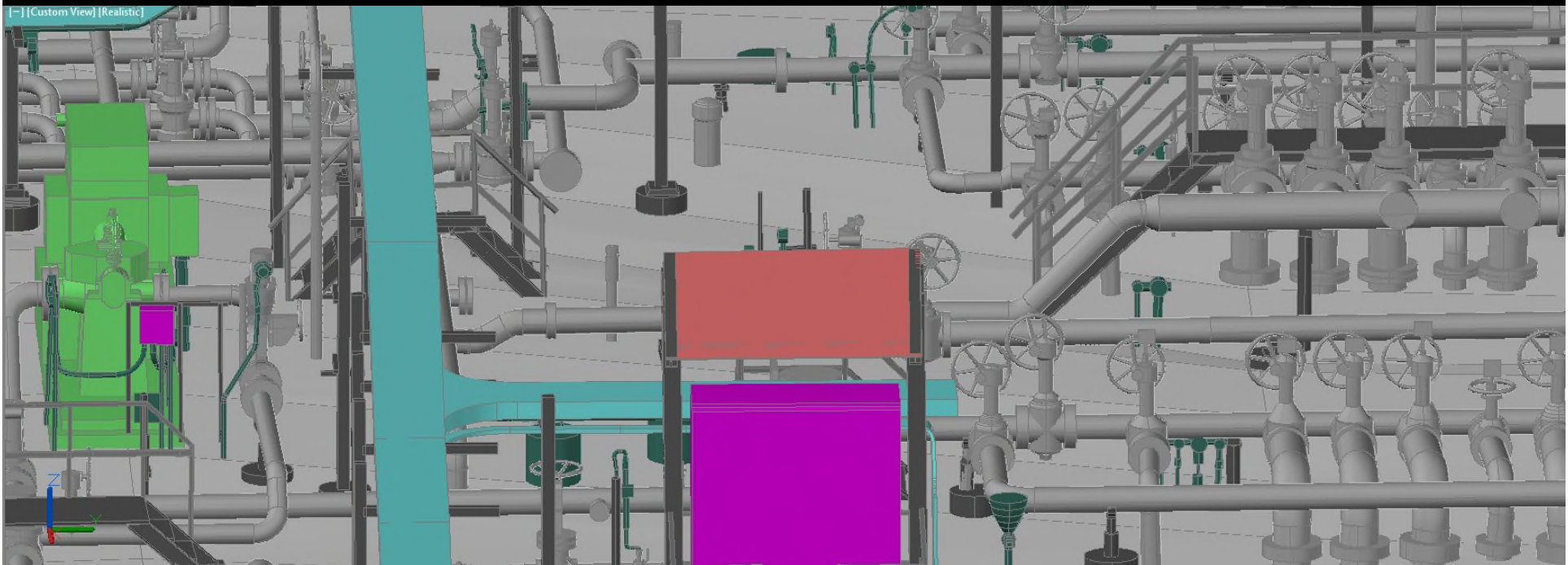
Deliverables

3D CAD Model – Overview (Zoomed In)



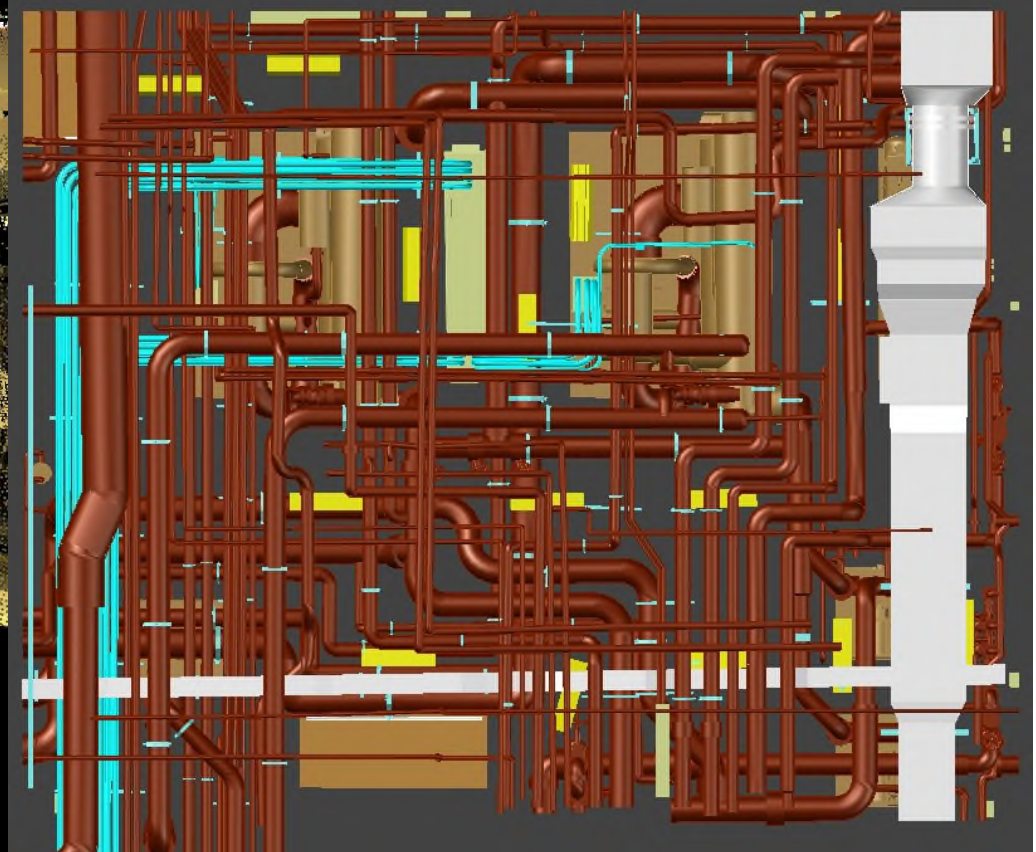
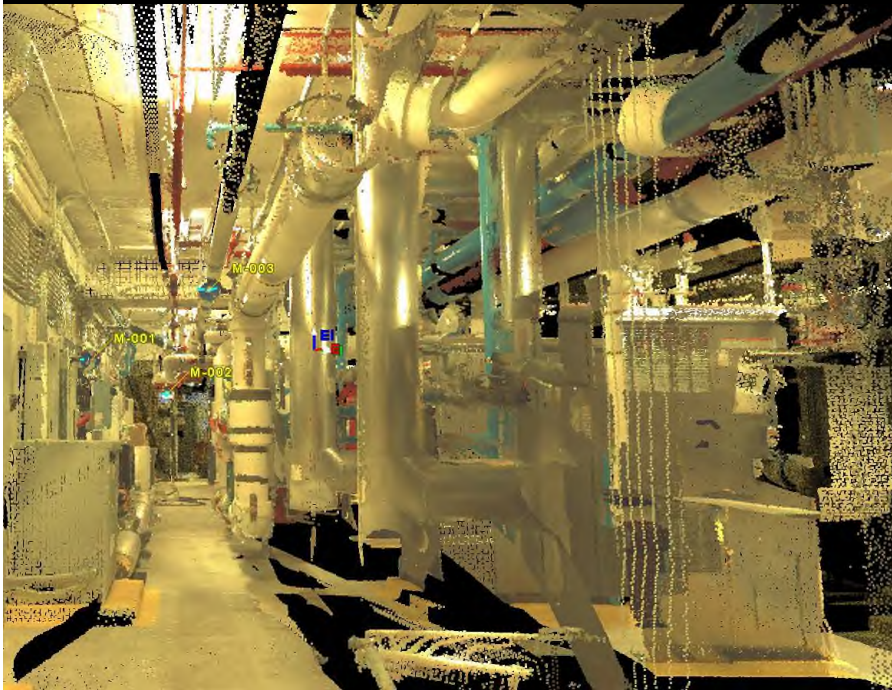
Deliverables

3D CAD Model – Close Up



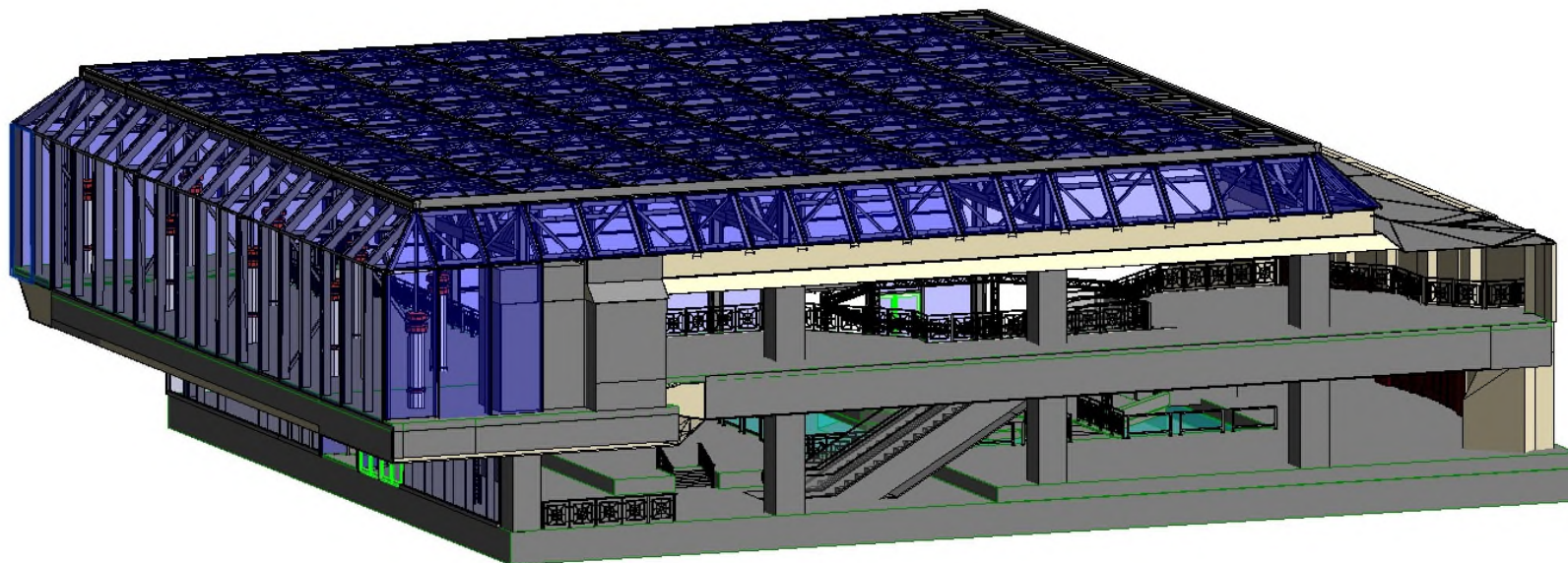
Deliverables

3D BIM Model of Structure & MEP



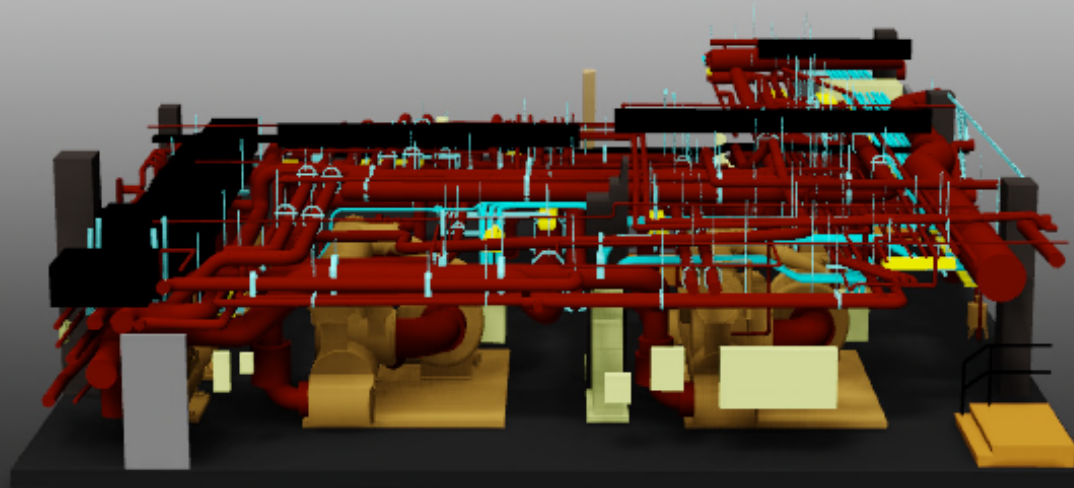
Notable Projects

Hyatt Regency – Chicago, IL.



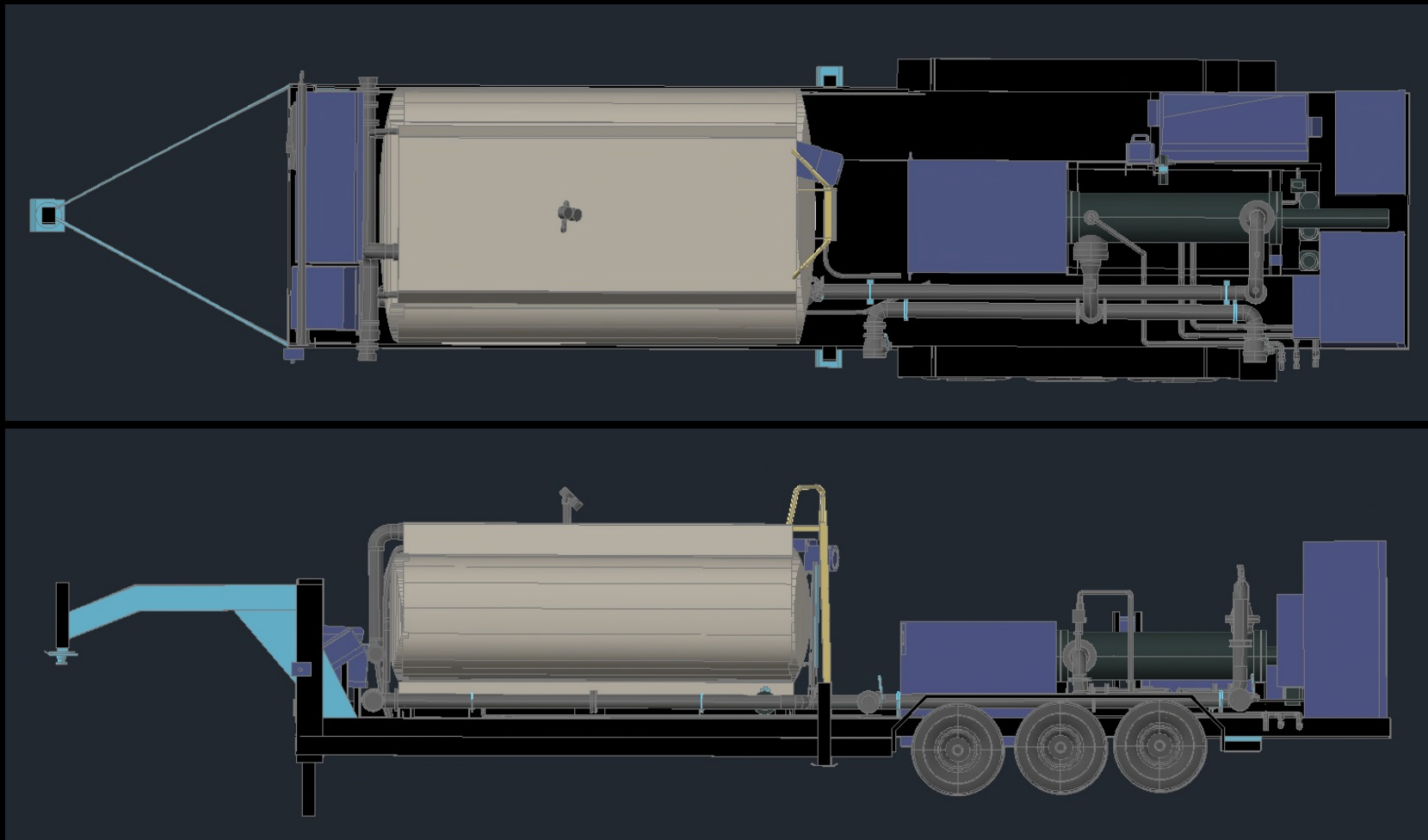
Notable Projects

Ohio State University Medical Center Mechanical Room –
Columbus, OH.



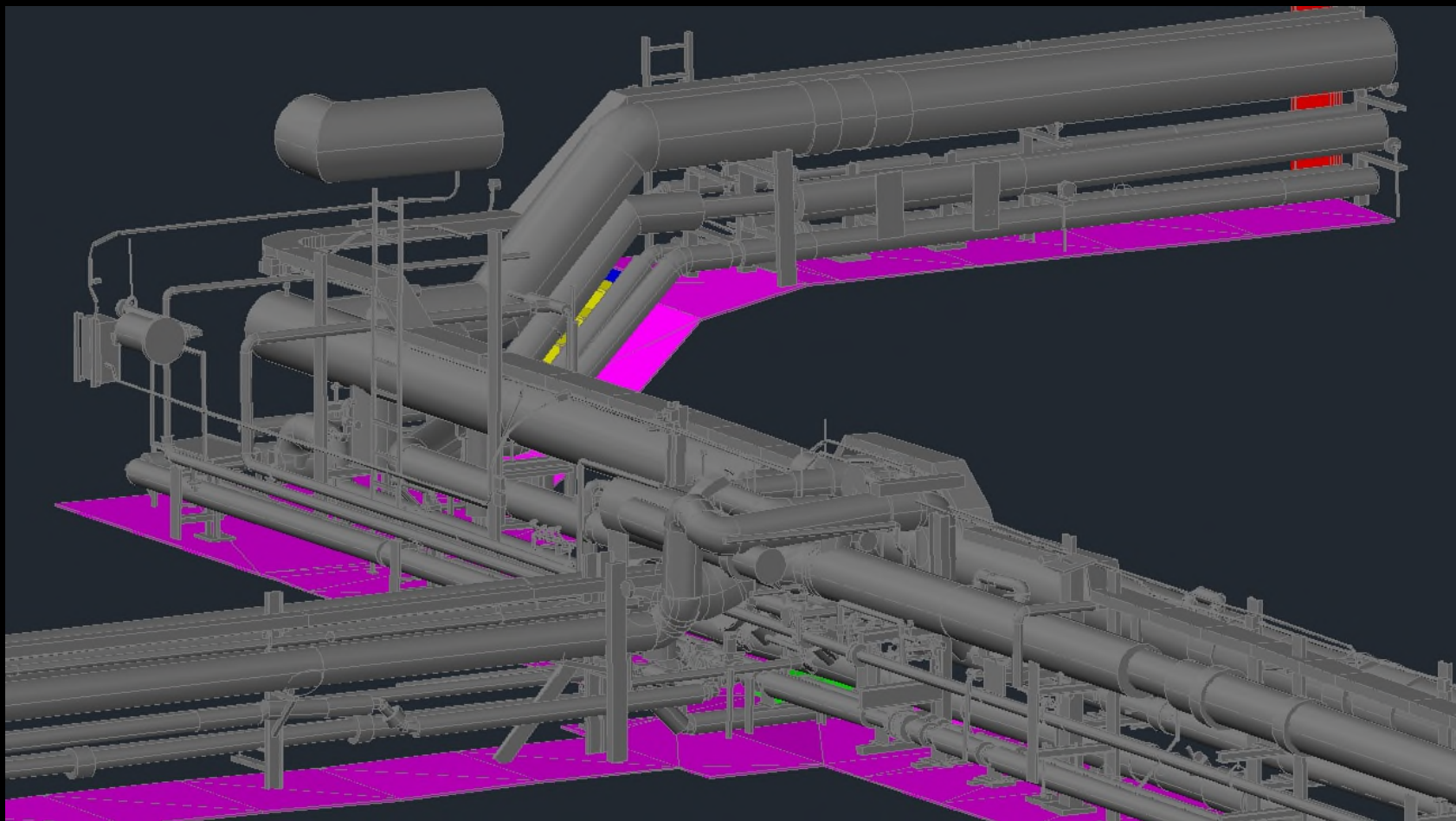
Notable Projects

Marathon Petroleum Company – Cincinnati, OH.



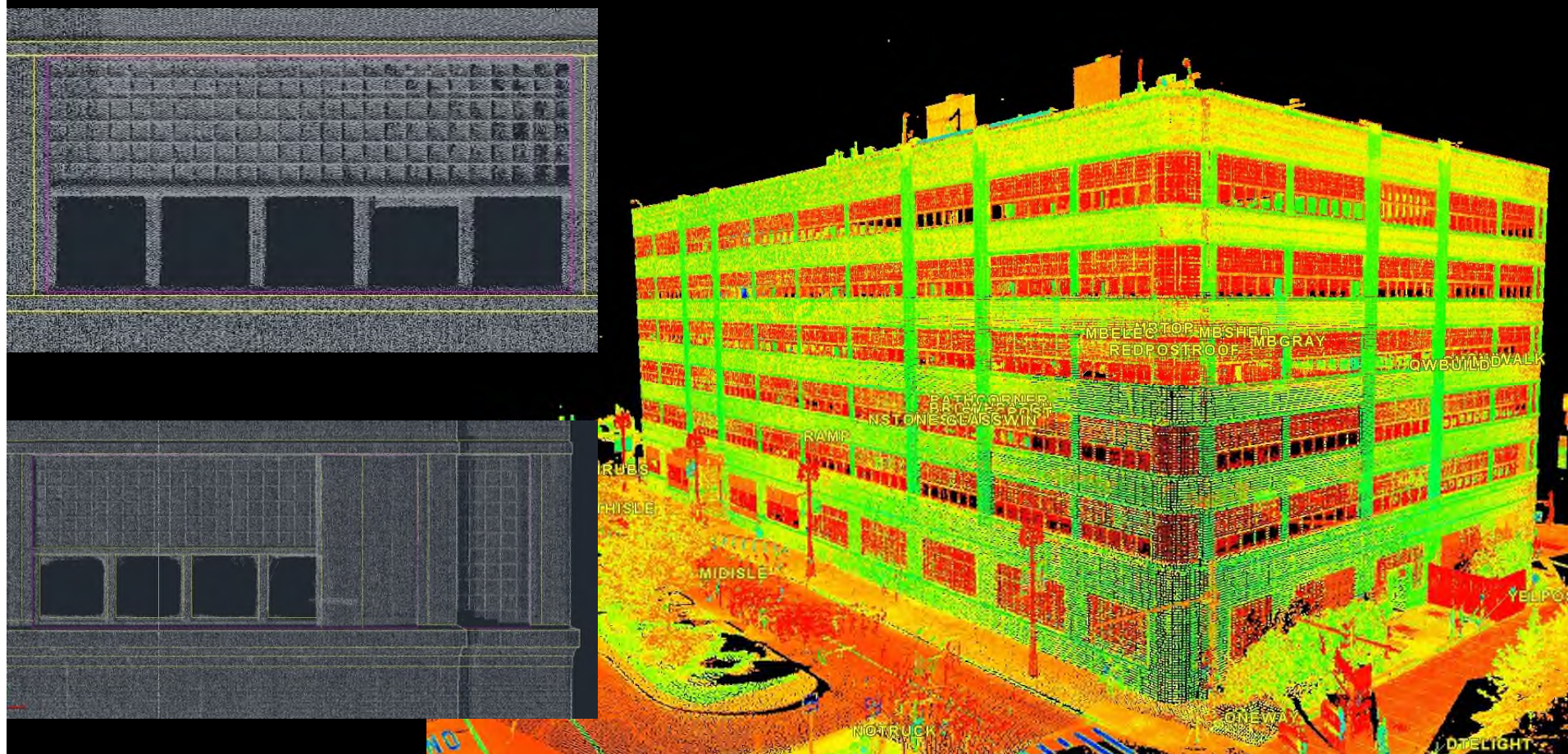
Notable Projects

University of Michigan – Ann Arbor, MI.



Notable Projects

DTE Energy – Detroit, MI.



Notable Projects

Franklin Conaway & Associates & Heritage Ohio
Historical Trautman Building – Columbus, OH.



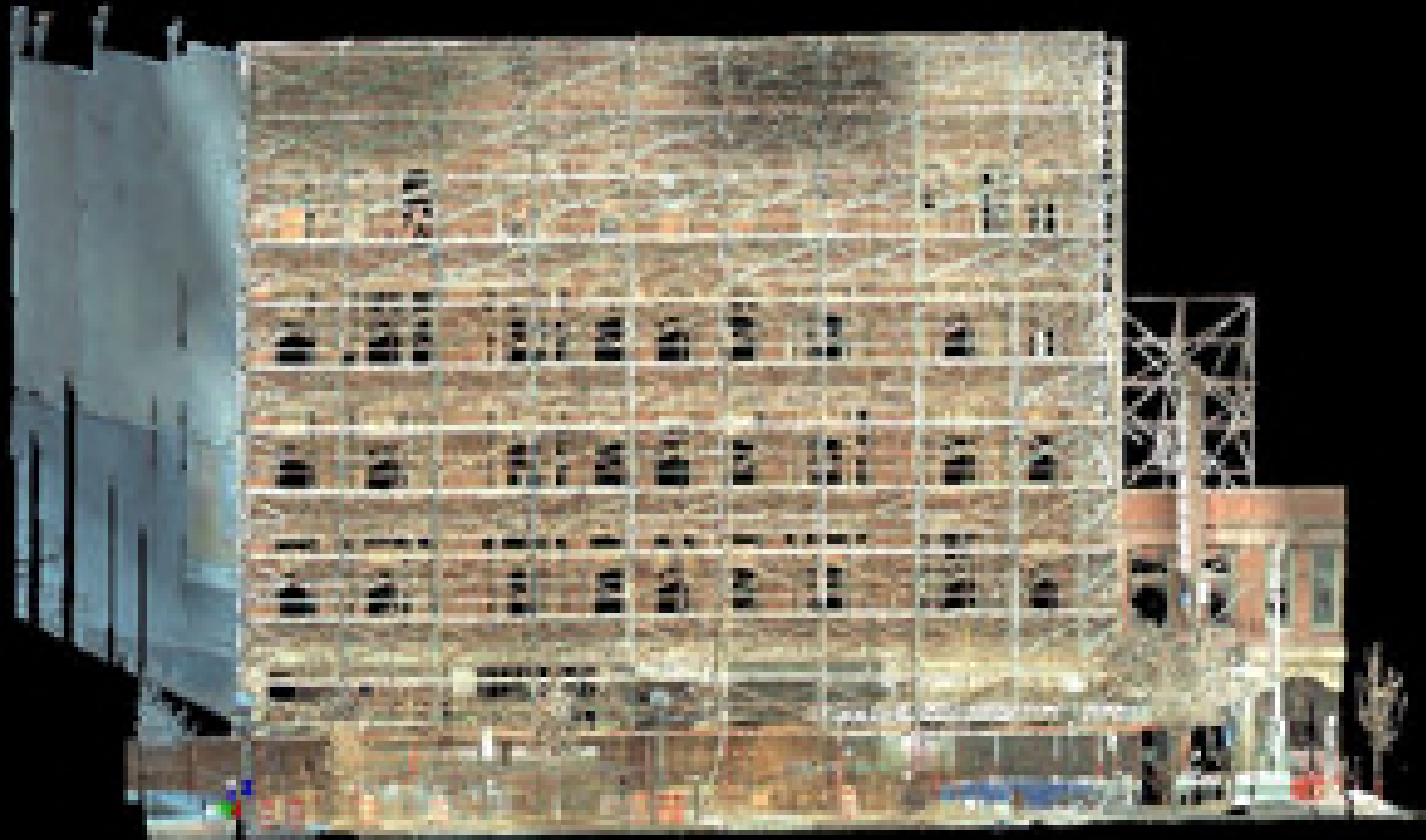
Notable Projects

Franklin Conaway & Associates & Heritage Ohio
Historical Trautman Building – Columbus, OH.



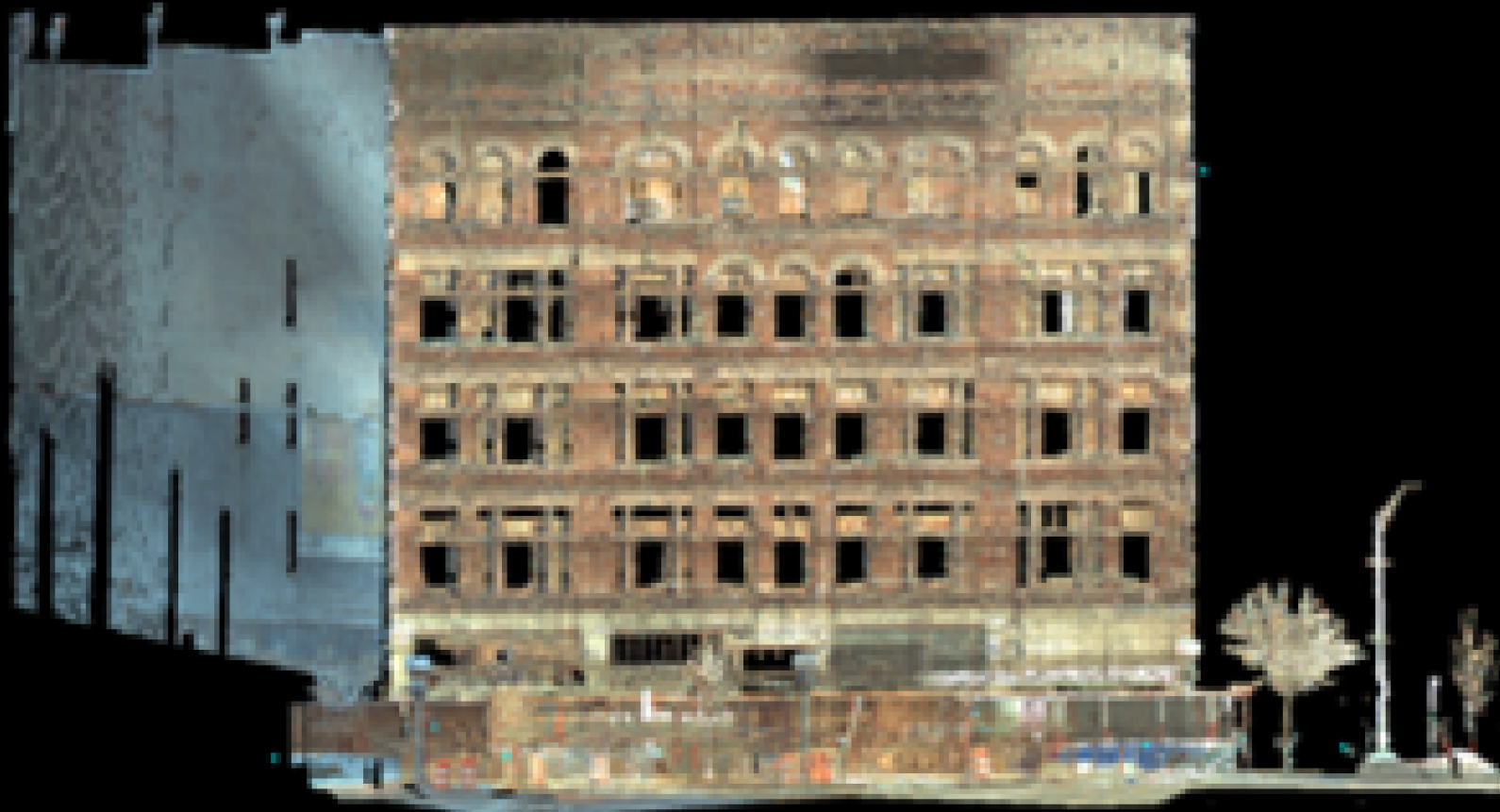
Notable Projects

Franklin Conaway & Associates & Heritage Ohio
Historical Trautman Building – Columbus, OH.



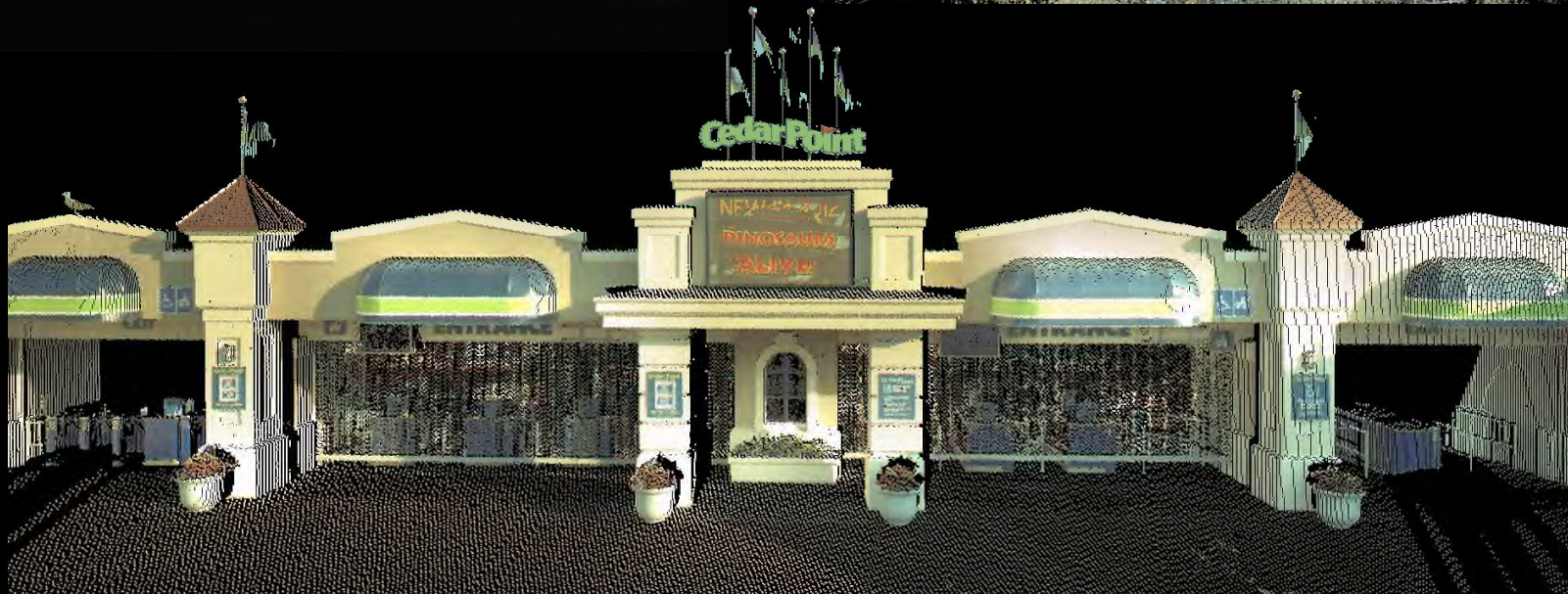
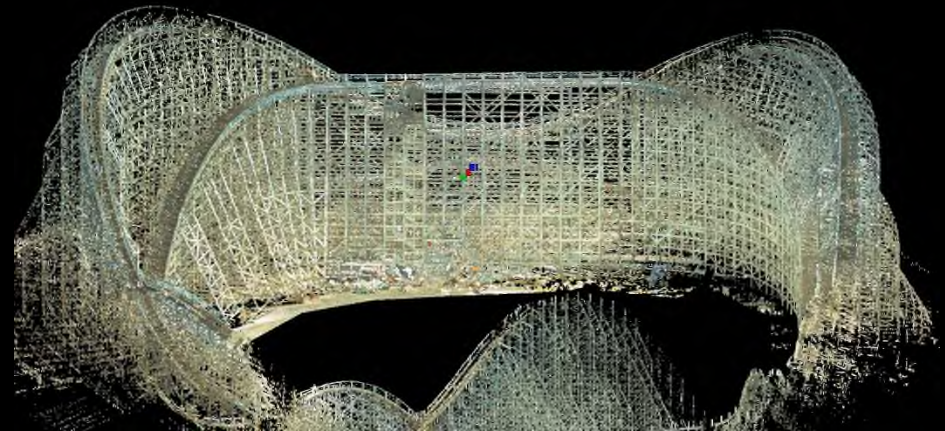
Notable Projects

Franklin Conaway & Associates & Heritage Ohio
Historical Trautman Building – Columbus, OH.



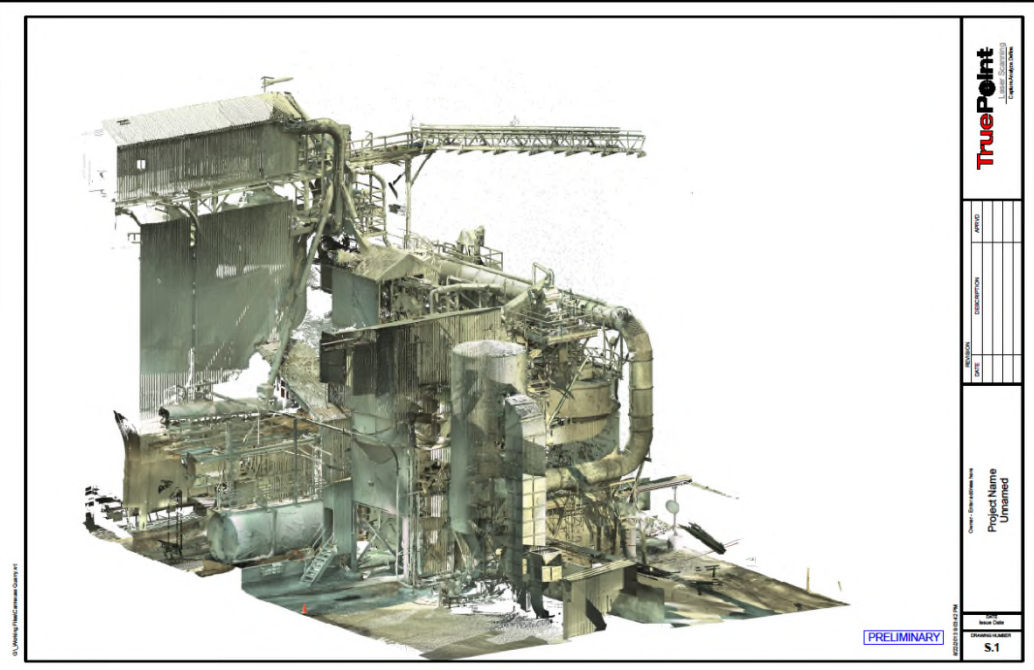
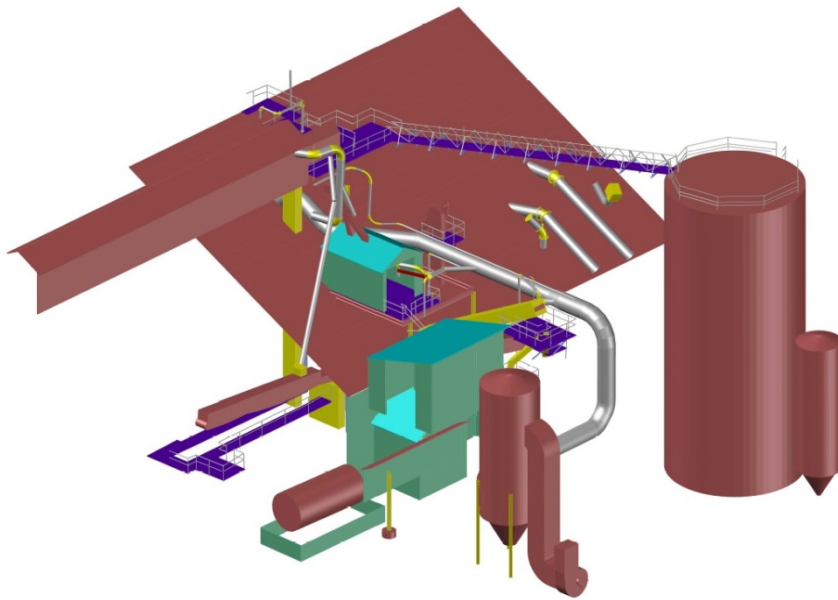
Notable Projects

Cedar Point Amusement Parks Sandusky, OH.



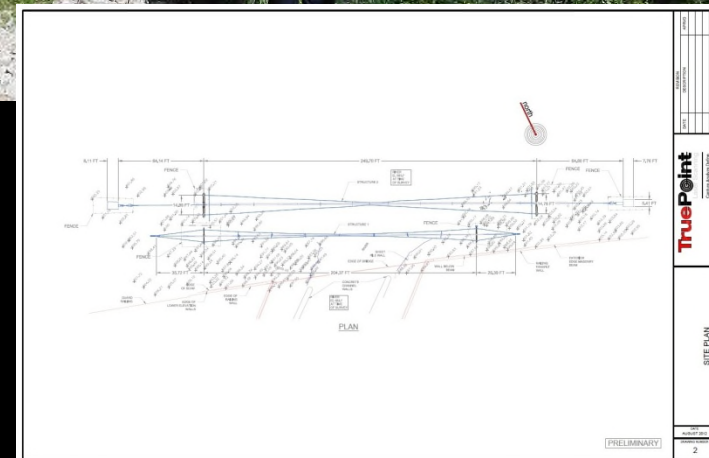
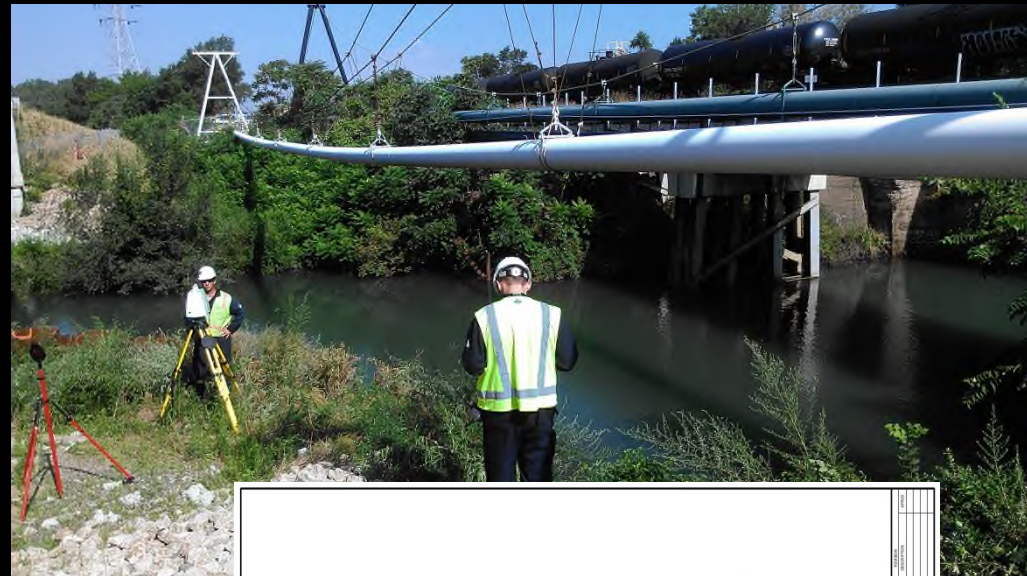
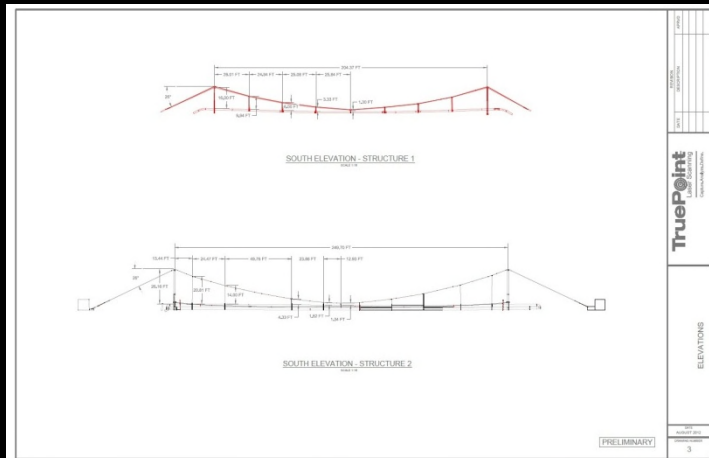
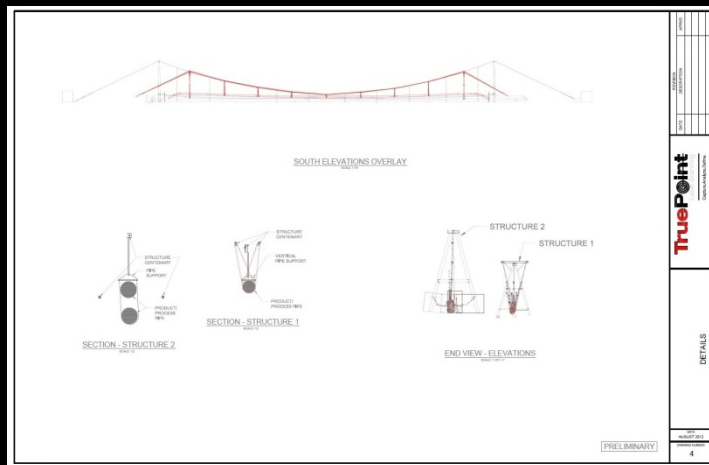
Notable Projects

Carmeuse Lime & Stone



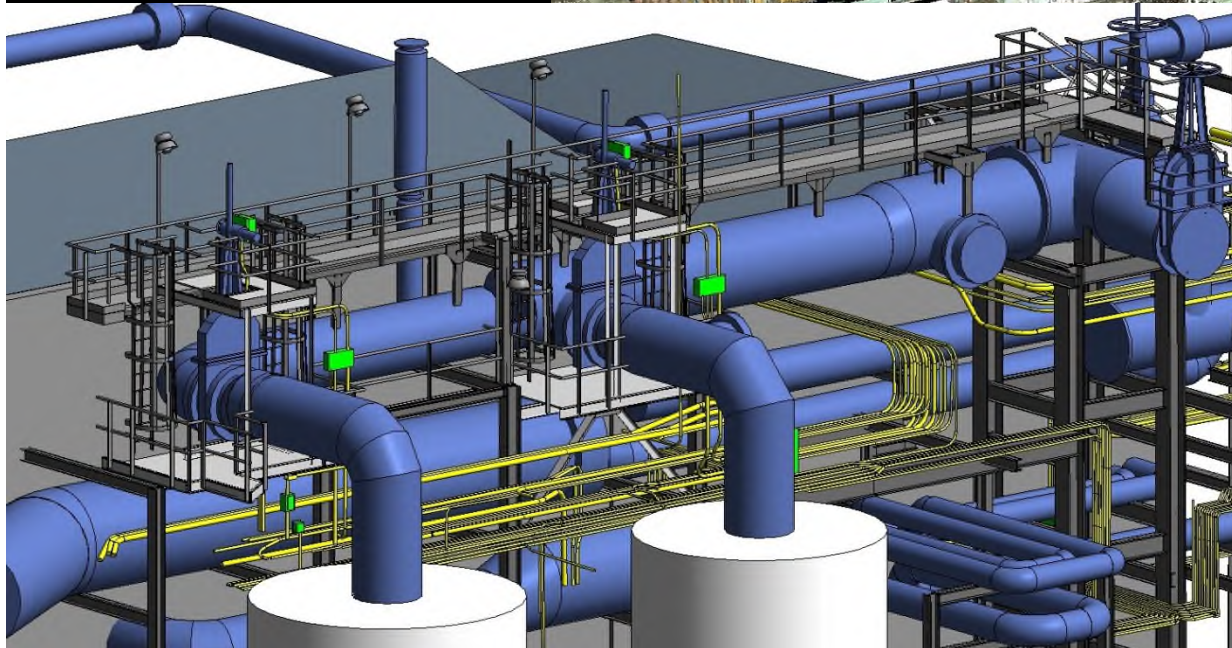
Notable Projects

BP Pipeline



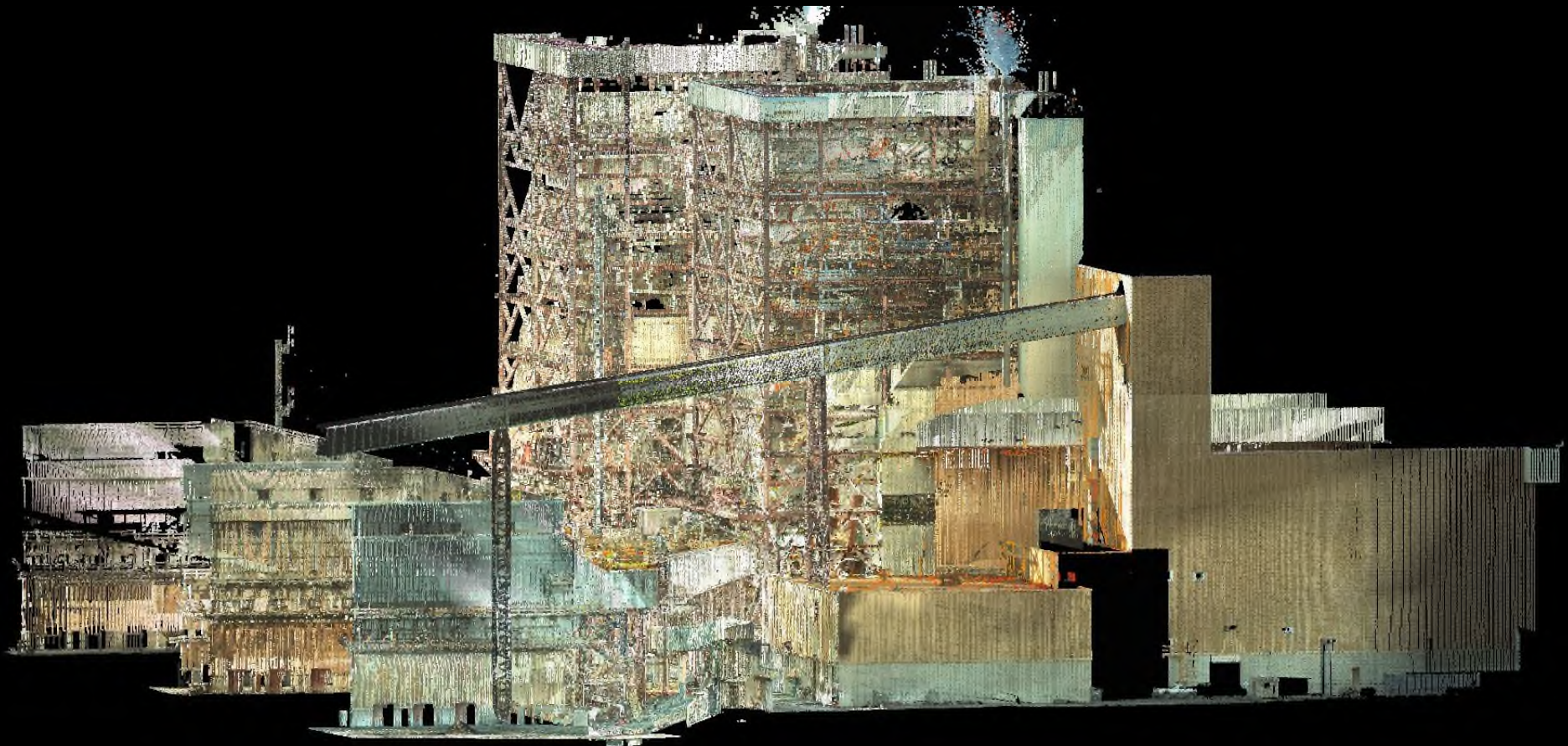
Notable Projects

US Steel Coking Plant



Notable Projects

Bridger Power Plant – Rock Springs, Wyoming



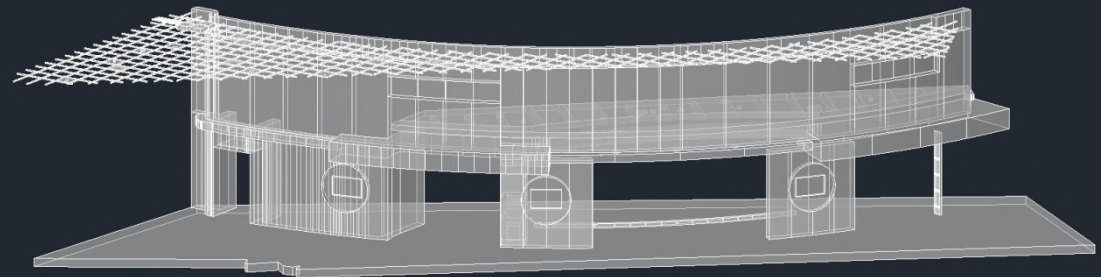
Notable Projects

Arcadis – Elgin MGP Substation



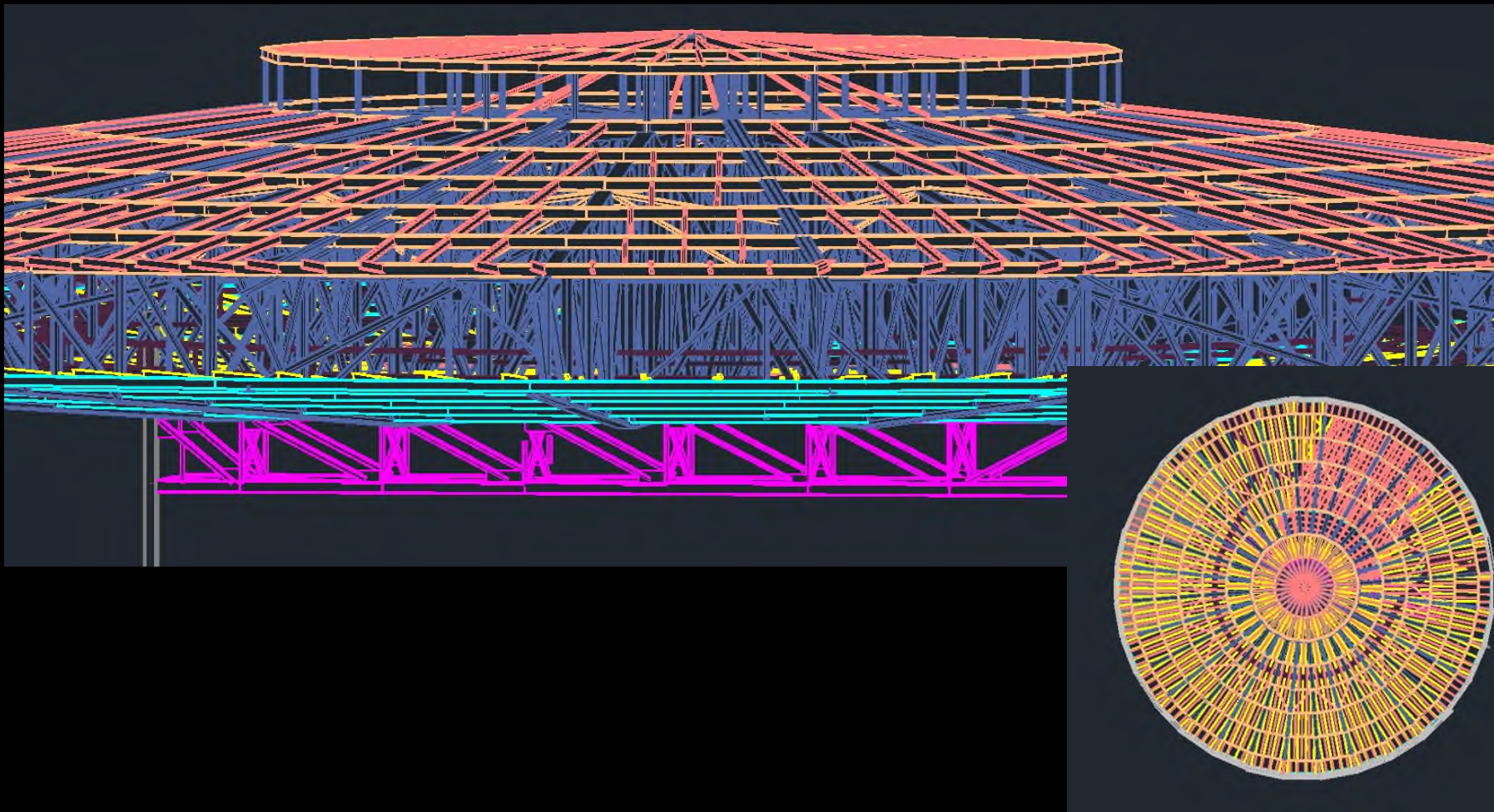
Notable Projects

Hollywood Casino – Columbus, Ohio



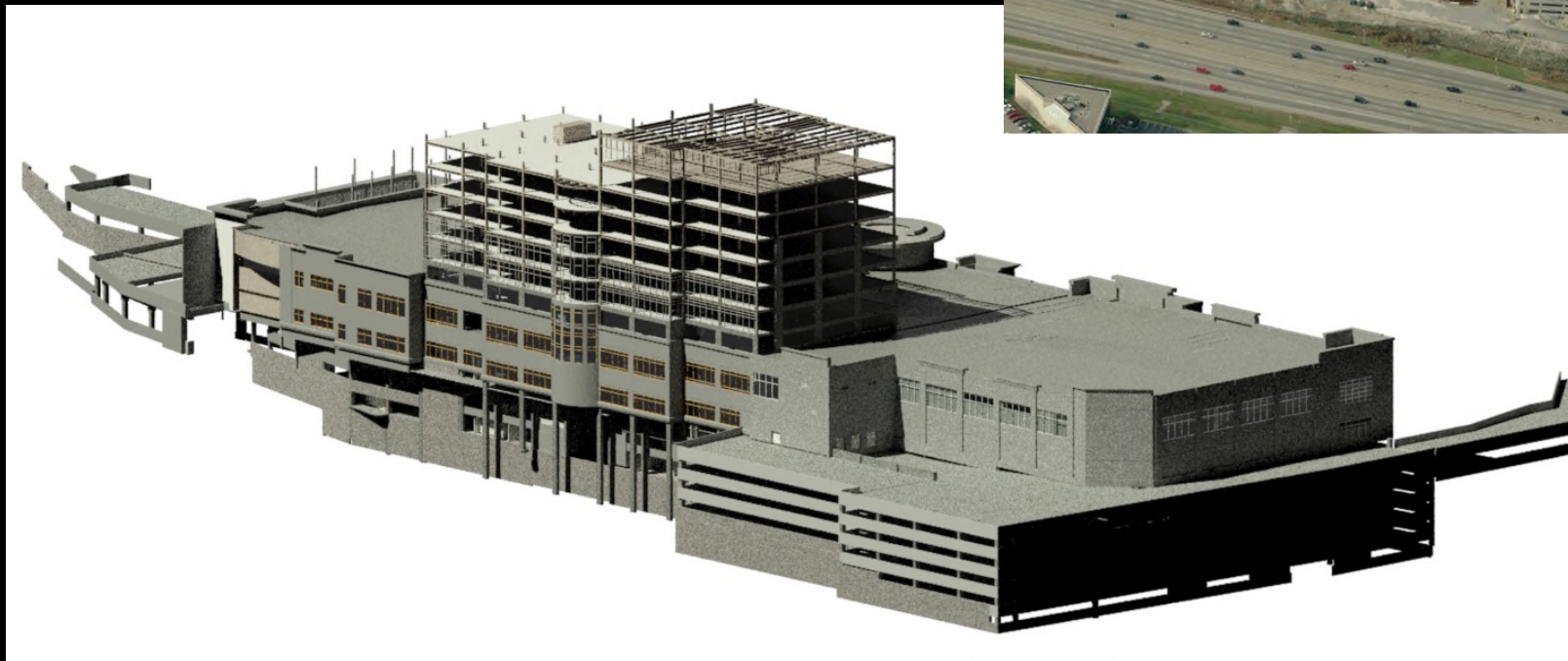
Notable Projects

Cobo Hall Arena - Detroit, MI.



Notable Projects

Kenwood Multipurpose Tower – Cincinnati, OH



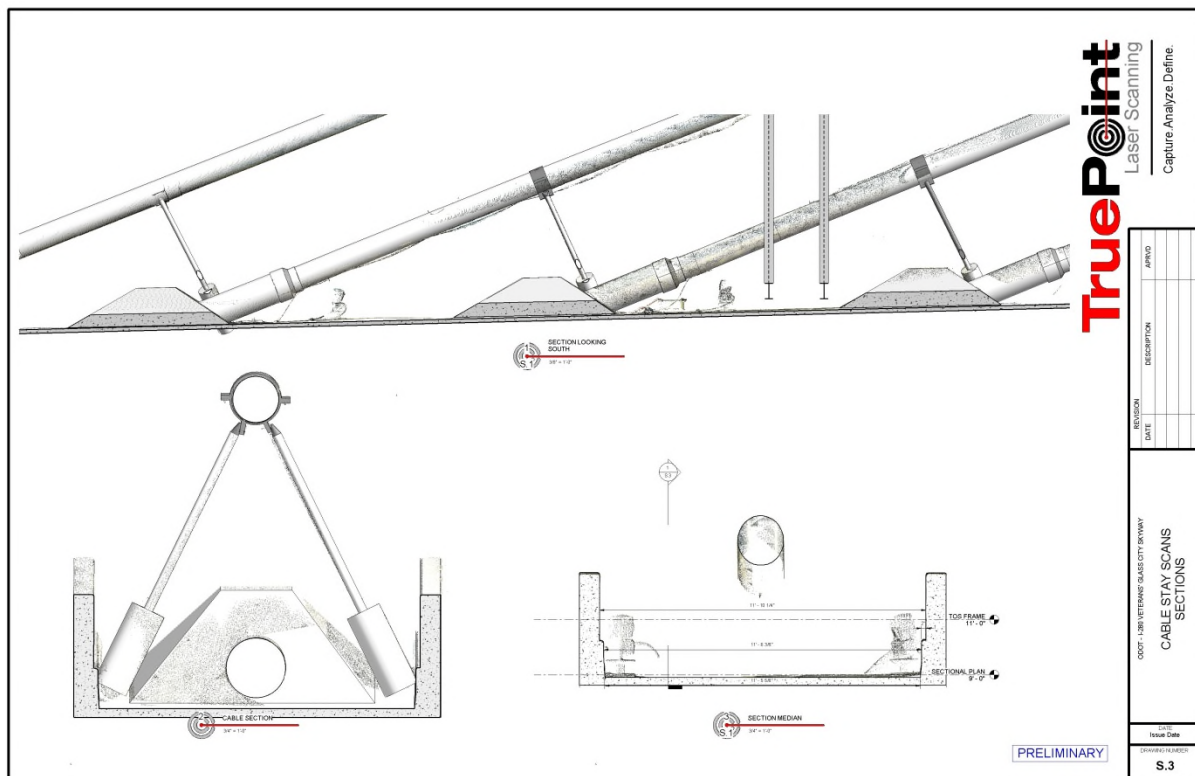
Notable Projects

600 Canal Street – New Orleans, LA



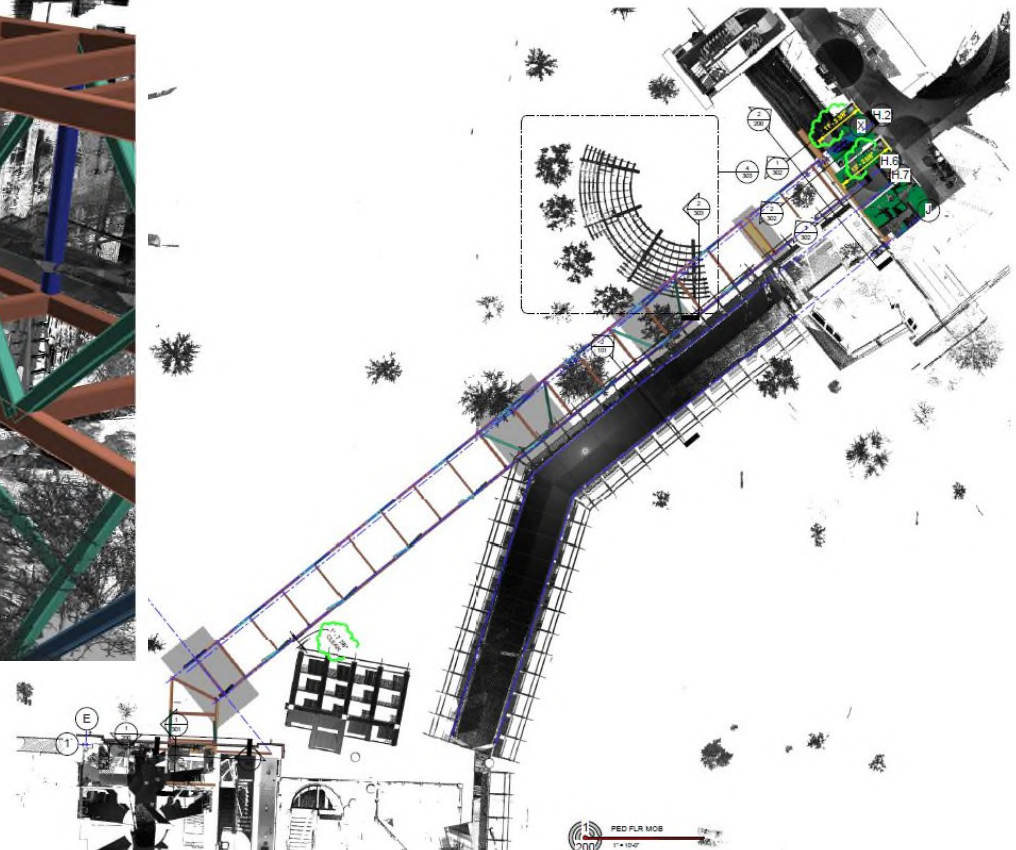
Notable Projects

Ohio Department of Transportation & University of Toledo –
Toledo, OH.



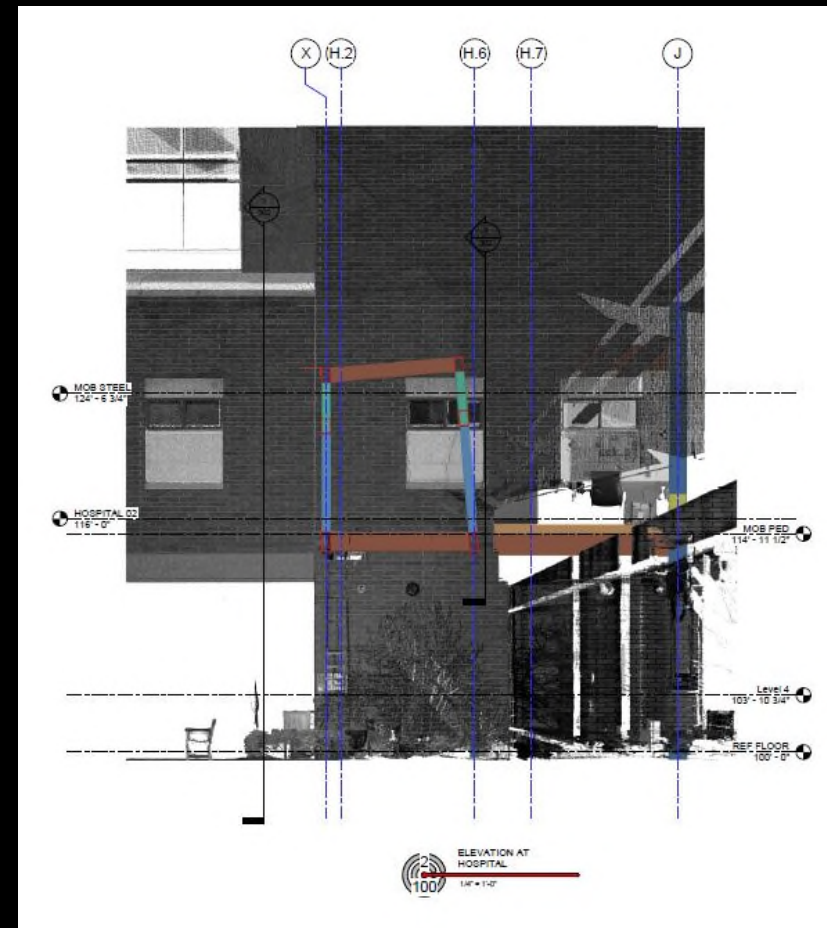
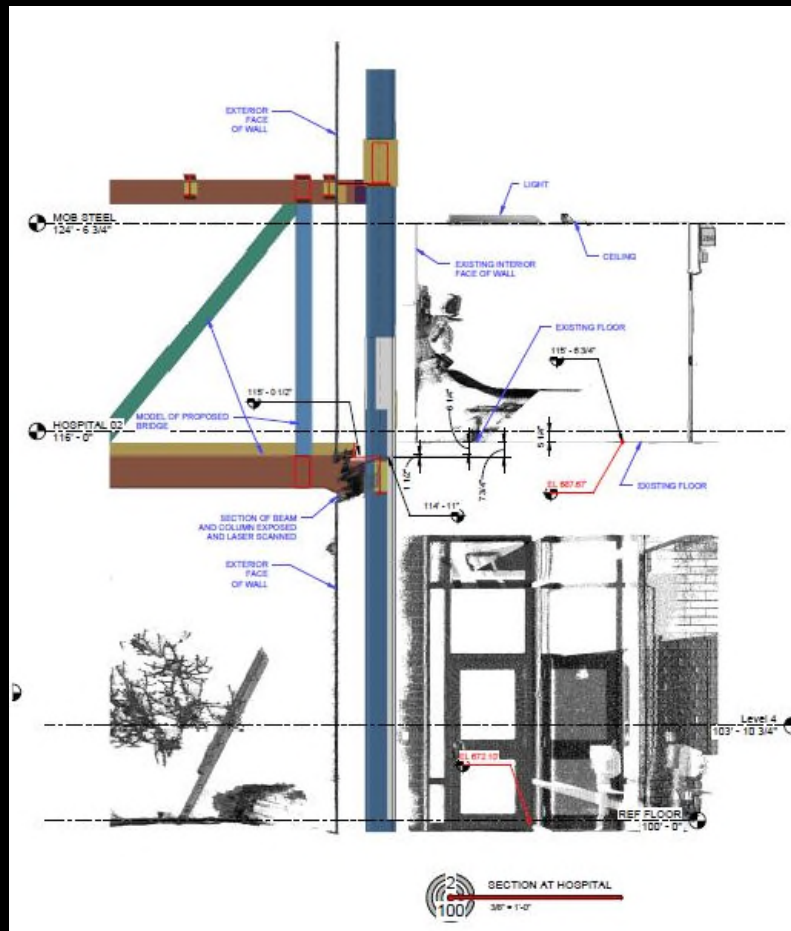
Notable Projects

Norton-Brownsboro Hospital – Louisville, KY.



Notable Projects

Norton-Brownsboro Hospital – Louisville, KY.



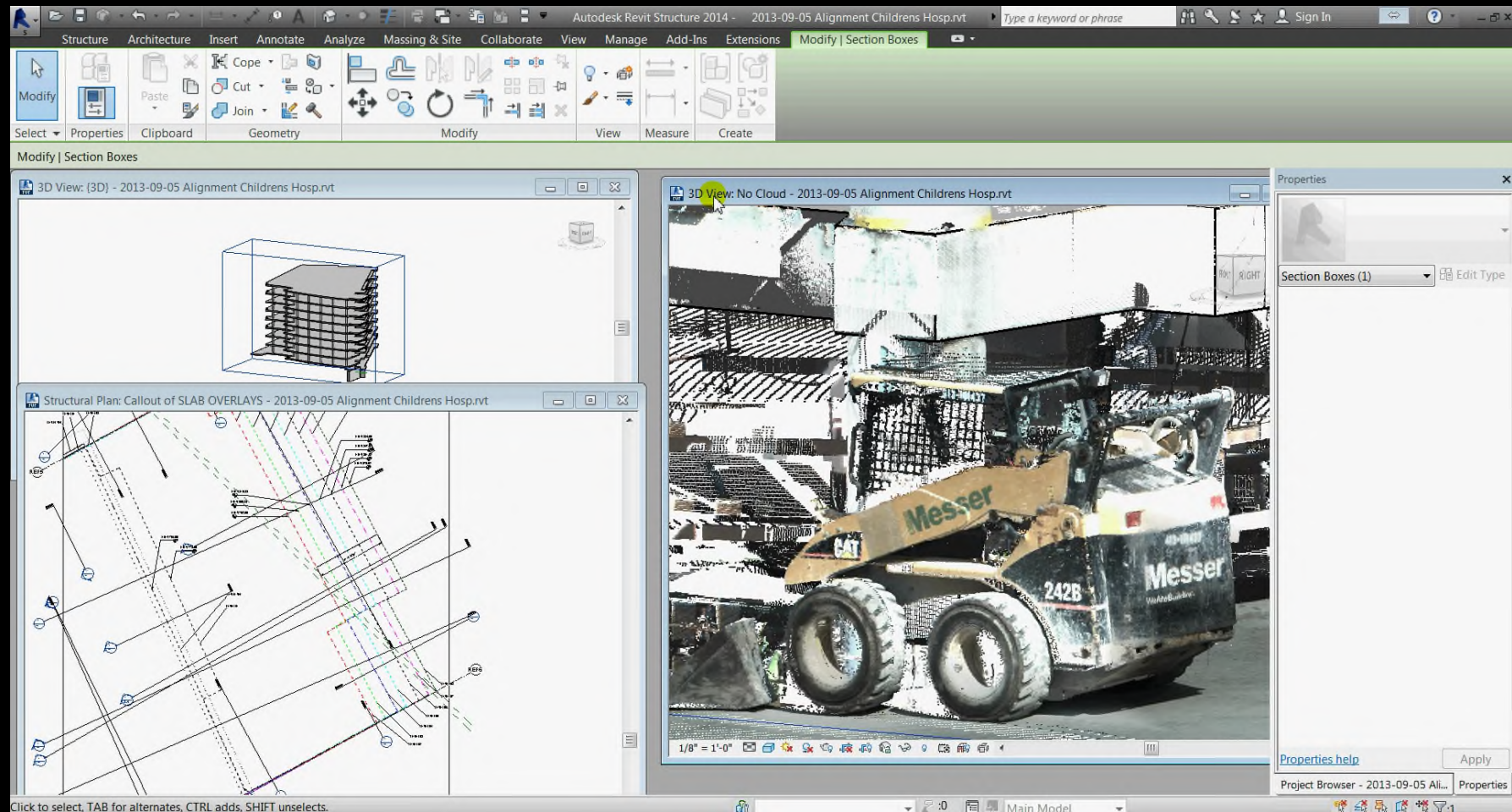
Notable Projects

Cincinnati Children's Hospital – Cincinnati, OH



Notable Projects

Cincinnati Children's Hospital – Cincinnati, OH



Notable Projects

Wayne County Courthouse



Benefits for Projects

- © Limit Change Orders
 - © Typically 3-5% project cost in change orders
 - © 1/3 Owner Requested
 - © 1/3 Errors and Omissions
 - © 1/3 Field Conditions
 - © Limit E/O and Field Conditions Change Orders
- © More info for design teams early = better design



How to best see value

- © Contract Directly
 - © Most Value and control for owner
- © Add Laser Scanners to Project Team
 - © Owners ultimately pay for scanning plus markup
- © Suggest Project Team use Laser Scanning
 - © Owners ultimately pay for scanning plus markup
 - © Owners expose themselves to Field Condition Change Order Costs

Contact Information

TruePoint Laser Scanning, LLC.
6800 W. Central Avenue, Suite E-1
Toledo, Ohio 43617
419-843-SCAN (7226)

www.TruePointScanning.com

Ryan Hacker
rhacker@truepointscanning.com

Ann Arbor/Detroit – 734-807-0117

Chicago – 312-448-1509

Cincinnati – 513-609-7244

Cleveland – 216-470-7262

Columbus – 614-800-0378

Dallas, TX. – 214-551-6201

Indianapolis, IN. - 317-560-1565

Orlando, FL. – 407-558-9716

Pittsburgh – 412-639-7564

Washington D.C. – 703-517-5773