

## USING ONLINE MAPPING SYSTEM (OMS) TO MAKE NR USGS MAP EQUIVALENT

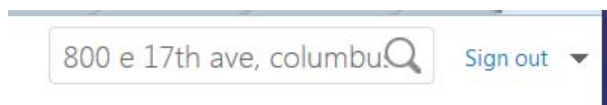
National Park Service requirements:

- Reproducibility in greyscale
- Subject property clearly marked
- North arrow
- Scale (see TIP3 on pg 2)
- WGS/NAD datum and UTM / Lat Long (see TIP5 on pg 2)
- **Two maps:** one showing a close up view, one showing a wider context (similar to scale of USGS)

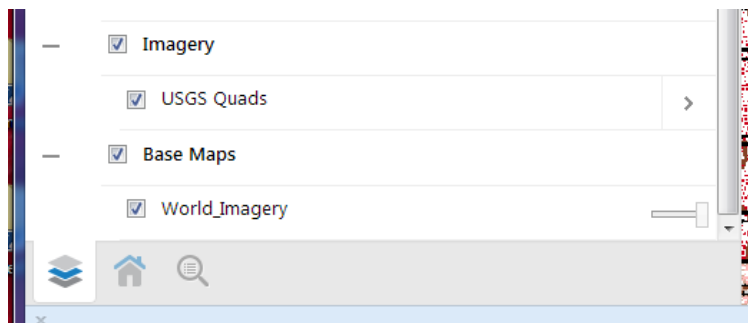
Navigate your web browser to <http://www.ohpo.org/gis>

Use free public access Username: *public* and Password: *password* to access online mapping.

Use search box to search by address or zoom in manually to subject property.



Use the Layers tab (at the bottom left of the collapsible left-hand data frame) to view the checkboxes for the USGS quad map and the ESRI World Imagery aerial photo. Uncheck the one you do not wish to use as your background image.



Open toolbox toolbar by clicking on icon in upper right corner:



Click on "Drawing" tab to open drawing tools.

Use drawing tools to mark subject property. Pop-up dialog boxes provide hints on how to use each tool when you click on them.

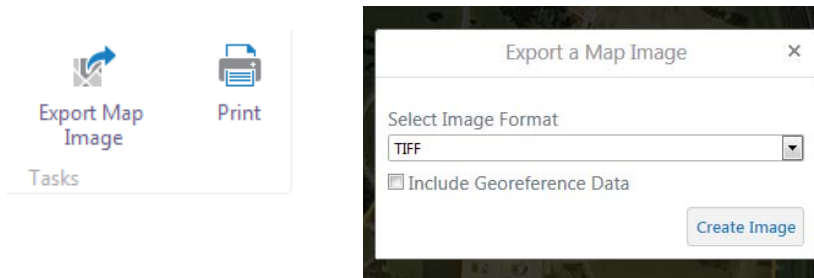
**TIP1:** Use the Edit button in conjunction with the Styles button to change the color of drawn items or the size and color of added Text. Text size can also be edited manually by clicking the Edit button, clicking on the added Text (click OK on pop-up "Change Text" window unless you also want to change the words) and then click and drag on corners of text box. Click Edit button again to save changes.



**TIP2:** You must use colors for your added drawn shapes that will show if the map is reproduced in greyscale. Colors in the OMS are limited – yellow is the best option for the aerial background; alternately, you can export the image with no mark-ups and use a photo editing program (e.g. Photoshop) to add mark-ups that clearly indicate the subject property.

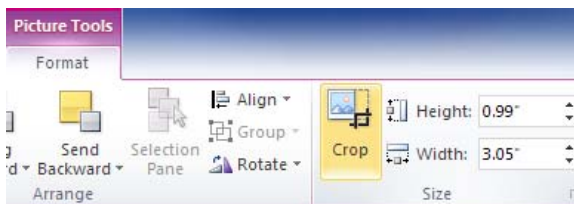
Click on “Tools” tab.

Click “Export Map Image” button and select desired format from the pop-up window.

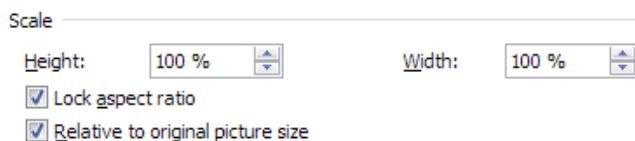


Add exported image to NR continuation sheet and label with north arrow, scale, property name and location, WGS/NAD datum & UTM/Lat Long.

**TIP3:** Scale shows on the map in the OMS but does not export so use the “Print Screen” key on your keyboard to grab the scale bar. Paste “Print Screen” image into your continuation sheet and use the Crop tool in Word to crop image down to just the scale.

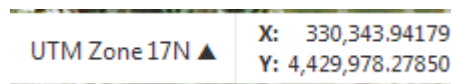


**TIP4:** Make sure your map image and scale image are at the same percentage. Select an image by clicking on it, then right click and select "Format Picture" from the drop-down. Click on the "Size" tab in the pop-up window and double check the Height and Width percentages are the same for both images.



Return to OMS. Zoom out (see requirements at top of page 1 of this document) and repeat steps to create your second map (see examples on pages 3 and 4)

**TIP5:** The OMS can also be used to collect your UTM/Lat Long coordinates. Click on the X/Y box in the lower left of the map to select your Datum and collect the resulting coordinates from the window that appears (also in the lower left). The coordinates will change to wherever your cursor is located.



United States Department of the Interior  
National Park Service

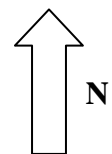
**NATIONAL REGISTER OF HISTORIC PLACES  
REGISTRATION FORM**

Section number \_\_\_\_\_ map \_\_\_\_\_ Page \_\_\_\_\_ 1 \_\_\_\_\_



Ohio History Center  
Columbus, Franklin County, Ohio

NAD 27



A) Z 17  
N 330217  
E 4430108

C) Z 17  
N 330533  
E 4429831



B) Z 17  
N 330567  
E 4430089

D) Z 17  
N 330208  
E 4429851

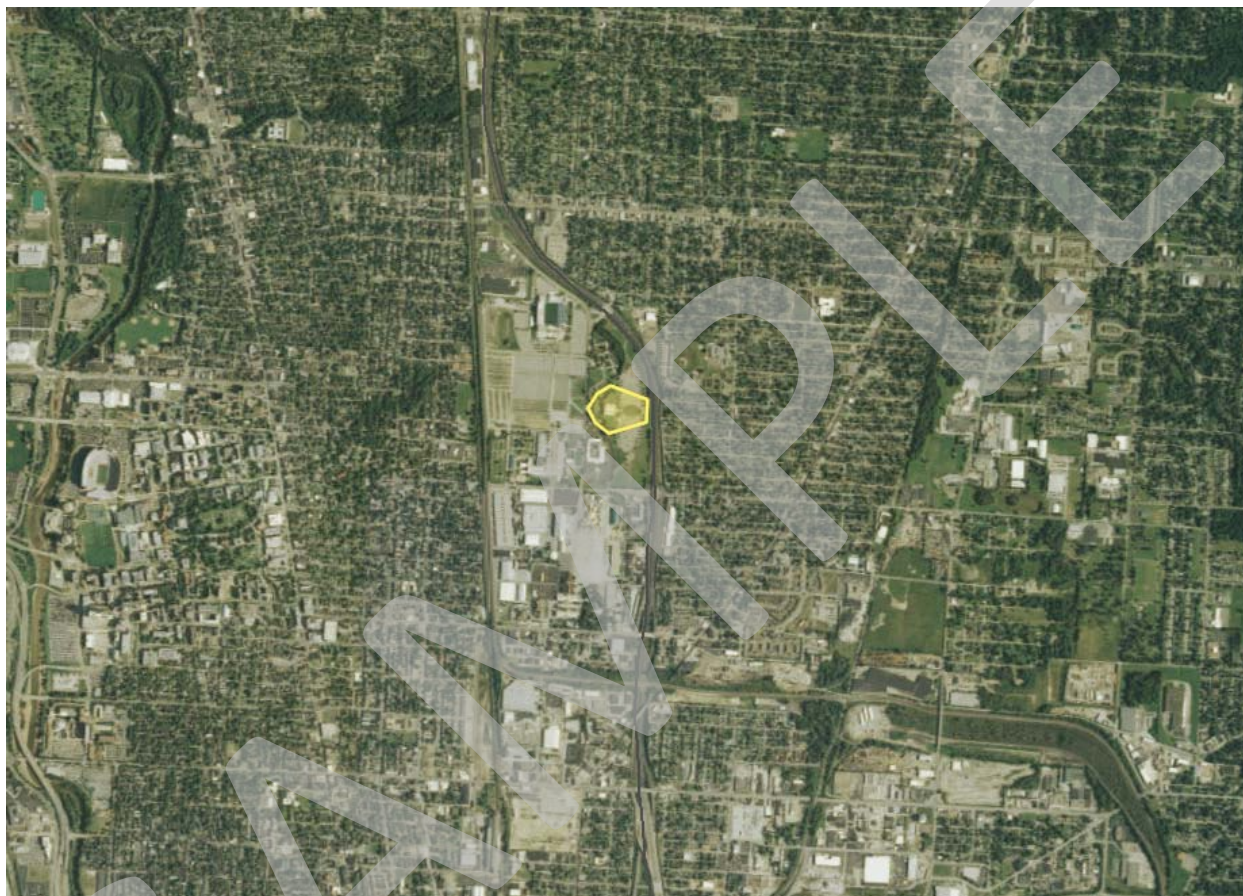
Map 1



United States Department of the Interior  
National Park Service

## NATIONAL REGISTER OF HISTORIC PLACES REGISTRATION FORM

Section number map Page 2

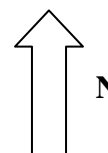


Ohio History Center  
Columbus, Franklin County, Ohio

NAD 27

A) Z 17	C) Z 17
N 330217	N 330533
E 4430108	E 4429831

B) Z 17	D) Z 17
N 330567	N 330208
E 4430089	E 4429851



Map 2