



## **Spontaneous Interventions & Temporary Use Strategies**



**Cleveland Urban Design Collaborative**  
1309 Euclid Avenue | [www.cudc.kent.edu](http://www.cudc.kent.edu)





# Community Design Practice

@

KENT STATE  
UNIVERSITY

CDC

CLEVELAND  
URBAN DESIGN  
COLLABORATIVE

# Temporary Use Strategies

Change | Time | Residue

Past Imperfect

Downloaded from <http://www.jstor.org/stable/2302260>

Psychiatric studies and movements has left Cleveland, Ohio with a vast inventory of vacant and underutilized properties. POP UP CITY is an ambitious research program, which explores ideas for urban reinvention through temporary interventions.

[illegible]

POP UP CITY

Has PCSD (2007) been a catalyst  
to cause that private enterprise  
and businesses are embracing  
sustainable development practices?  
And if not, particularly for  
that movement of people are  
often missing, what  
challenges and strategies  
remain, otherwise.

[www.cadmus.be/en/edu](http://www.cadmus.be/en/edu)

pop up city







**SHRINKING CITIES**

**FEATURING:**

- Double Dutch Will Take You Higher
- The Bright Red Fight
- Rainy Day Saints
- Fiat Can Co.
- Home and Garden

**BRING YOUR BLANKETS AND LAWNCHAIRS**

**>> OUTDOOR MOVIES AND MUSIC NIGHT @ Hyacinth Park**

**Friday, May 18**  
**7-10pm**

Outdoor event at Hyacinth Park in Slavic Village (East 63rd St. between Waterman and Wren Ave.) featuring live local bands and films from the Shrinking Cities Project.

Co-sponsored by Slavic Village Development and the Friends of Hyacinth Park.

In case of rain, the event will be held in the St Hyacinth Community Room, 6114 Francis Avenue, Cleveland.  
For more information please visit: >>

[www.cudc.kent.edu/shrink](http://www.cudc.kent.edu/shrink)

POP UP CITY Event-based community engagement





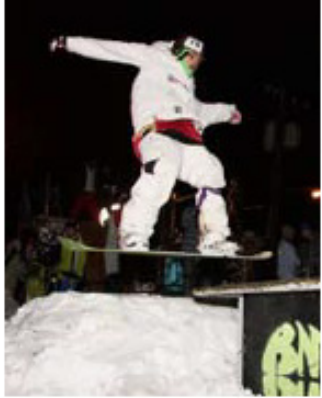


HISTORIC STAIRCASE Caltagirone, Sicily (2012)





LEAP NIGHT Flats East Bank, Cleveland (2008)



LEAP NIGHT Flats East Bank, Cleveland (2008)





LEAP NIGHT Flats East Bank, Cleveland (2008)



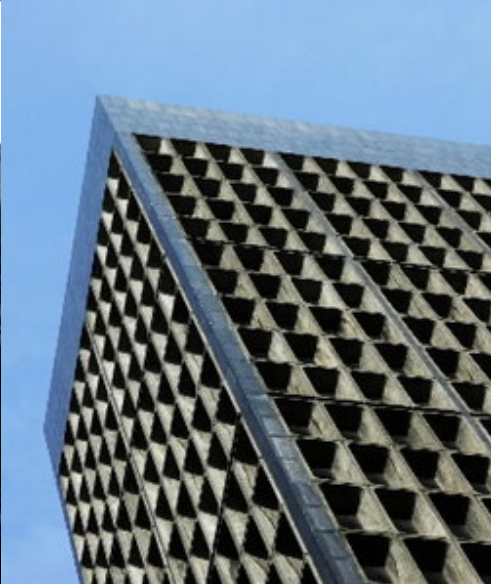
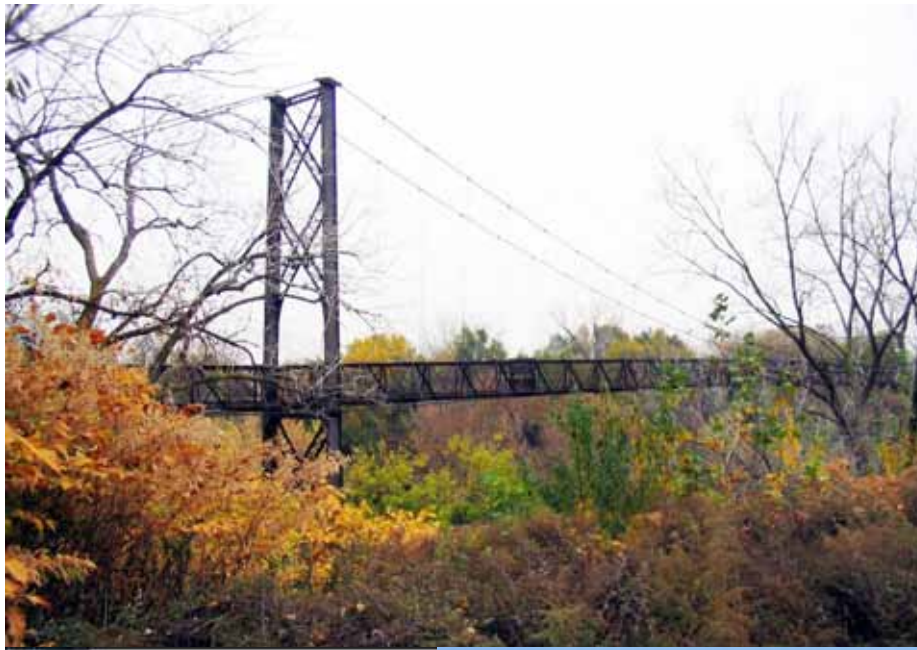
LEAP NIGHT Flats East Bank, Cleveland (2008)



Temporary Use Strategies

**Change | Time | Residue**

Past Imperfect







OLD COAST GUARD STATION Cleveland









1,500 HOMES DEMOLISHED Cleveland, 2013



HOUSE, TURNED INSIDE OUT Cleveland, 2009  
*Martin Papćun, artist*





**BLOOM** Massachusetts Mental Health Center, 2012  
*Anna Schuleit Haber, artist*

*(Photography by Jason Wyche, Courtesy Creative Time, 2014)*



**A SUBTLETY...or THE MARVELOUS SUGAR BABY** Brooklyn, 2014

*Kara Walker, Artist*





DETROIT SUPERIOR BRIDGE Cleveland, on-going

Charrette

+

Design-Build

Rapid Prototyping

Accelerated collaborative  
design session

Design and construction are  
undertaken as one entity

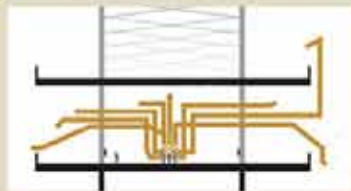
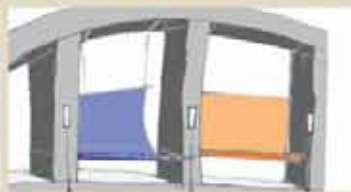
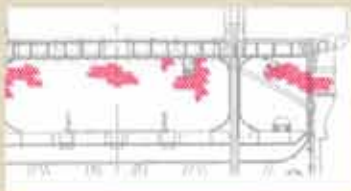
Process of quickly evaluating a concept  
through iterative series of prototypes. Fail  
early and often in order to succeed sooner.

**4 WEEKS**





# DESIGN CONCEPTS

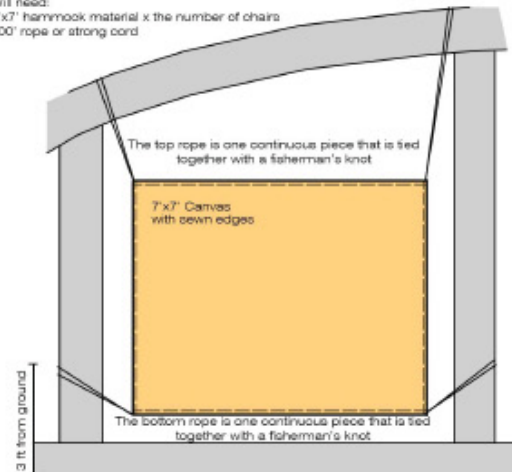




A seating installation would take advantage of the interesting structural features inside the bridge. A hammock tied to the adjacent arch and columns with rope could support the weight of visitors in need of rest.

## How to make the Hammock Chair

Will need:  
7'x7' hammock material x the number of chairs  
100' rope or strong cord



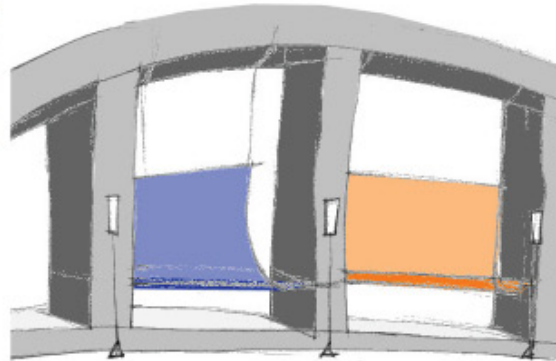
Closed Loop Knot to tie the hammock to the vertical and horizontal beams



Fisherman's Knot to connect the two ends of the rope



Detail of knots in rope



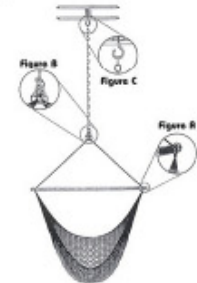
Site - near the East End of Bridge

Create a Lounge Feel

Walls surround lounge and pedestrians circulate through lounge



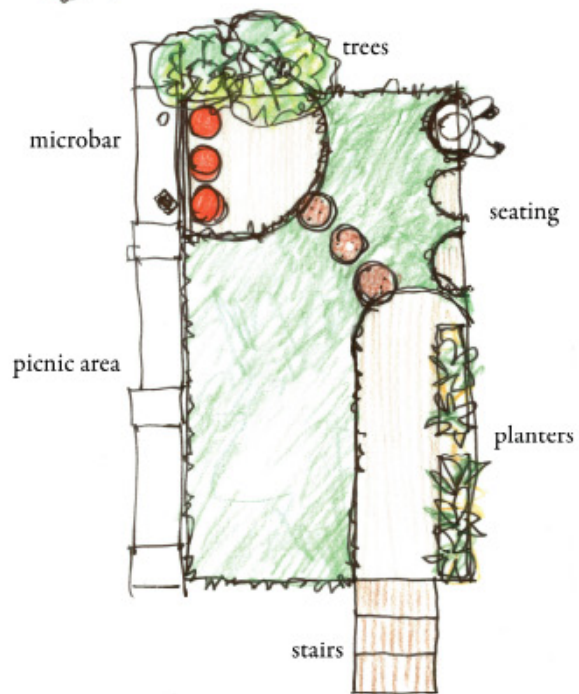
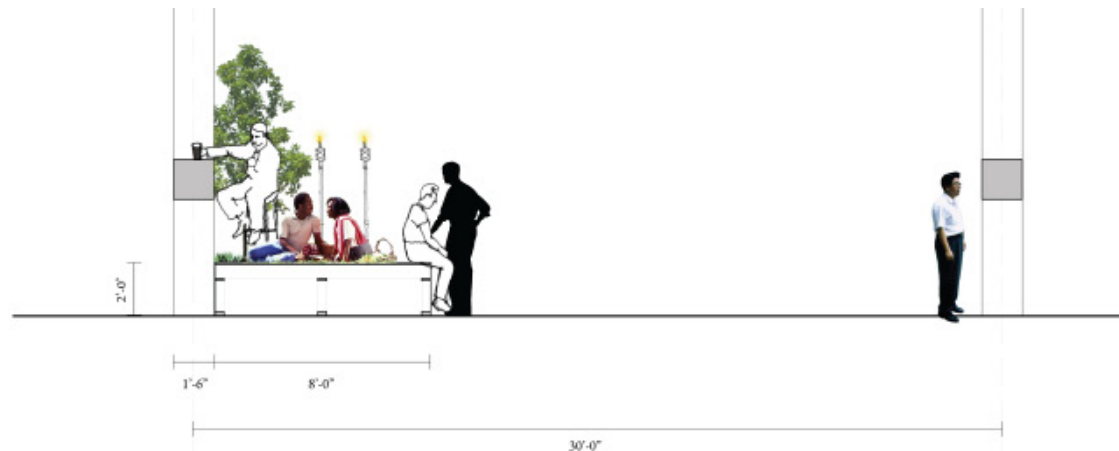
Existing Site



Examples of Hammock/Cradle Chairs

# ARCH HAMMOCKS : ALLISON MAYLE





**PICNIC PLINTH / CITY STAGE**

**we're up here!**

visible from:  
rta settlers landing  
cuyahoga river  
nautica pavilion area  
old river rd. at e. huron

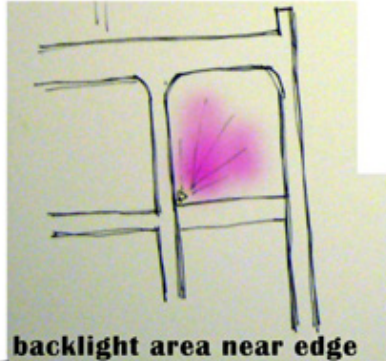
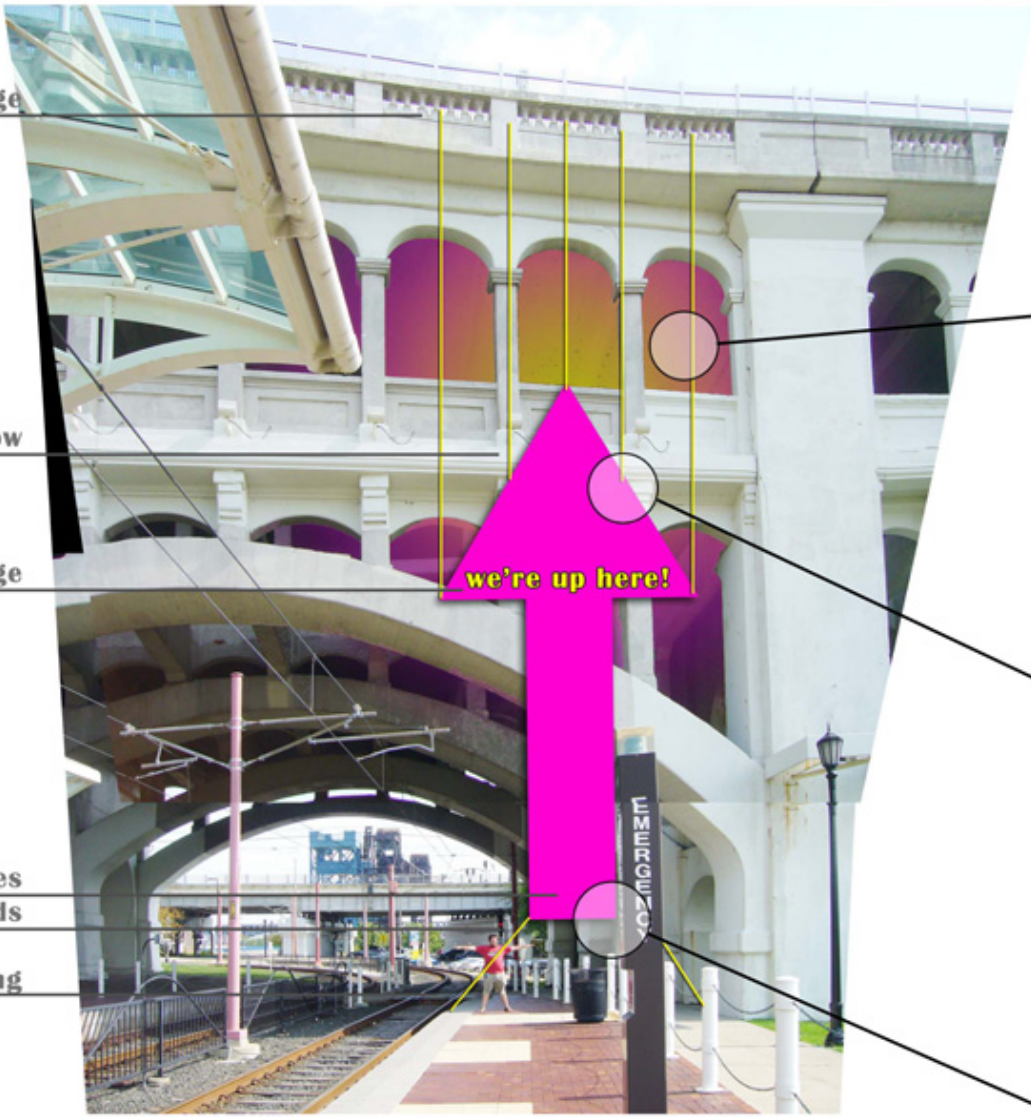
ties to bridge

ties to fabric arrow

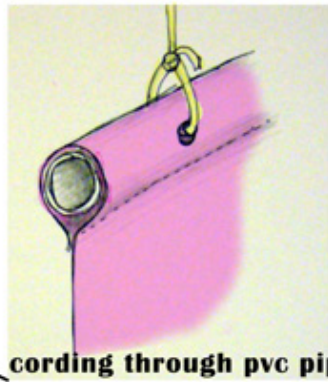
large message

info pouches  
ties to cords

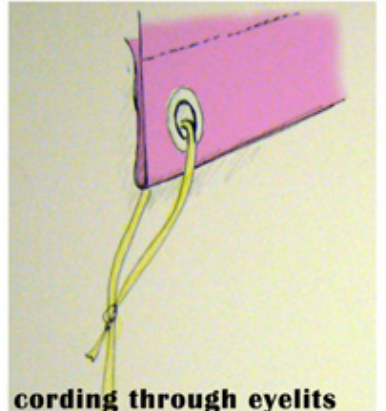
sandbags to keep from blowing



**backlight area near edge**



**cording through pvc pipe**



**cording through eyelits**





DETROIT SUPERIOR BRIDGE Cleveland



© Frank Lanza



## DATA RECORDING FORM

NAME (YOUR) \_\_\_\_\_ DATE ☐ FRI ☐ SAT TIME: \_\_\_\_\_

WHERE ARE YOU? (I.E. GREEN LOUNGE, BIKE LANE, BENCH ON CENTER SPAN, ETC.) PLS. BE SPECIFIC: \_\_\_\_\_

HOW MANY PEOPLE ARE THERE AT THIS SPOT: \_\_\_\_\_ WHAT ARE THEY DOING? \_\_\_\_\_

ANY QUOTES? (THINGS YOU'VE OVERHEARD PEOPLE SAY, OR THEIR RESPONSES TO QUESTIONS YOU'VE ASKED) \_\_\_\_\_

OTHER OBSERVATIONS? \_\_\_\_\_



*thankyou.*

# THE BRIDGE PROJECT | 2009

STUDENT  
DESIGN [BUILD]  
CHARRETTE

## REPORT

FINDINGS FROM THE TWO DAY  
EVENT AND RECOMMENDATIONS  
FOR THE FUTURE PUBLIC SPACE



# THE DETROIT-SUPERIOR CONNECTIVITY PLAN







## PROJECT PARTNERS

City of Cleveland + Cuyahoga County Department of Public Works

## FUNDERS

Northeast Ohio Areawide Coordinating Agency (NOACA)

Ohio Department of Transportation (ODOT)

National Endowment for the Arts (NEA)

Ohio City Inc.

The George Gund Foundation

The Cleveland Foundation

Third Federal Foundation

## PROJECT TEAM

Cleveland Urban Design Collaborative, Kent State University

Environmental Design Group

The Coral Company

Cypress Research

Levin Ventures

Larissa Itomlenskis

Jimmy Kuehnle



Cypress Research Group





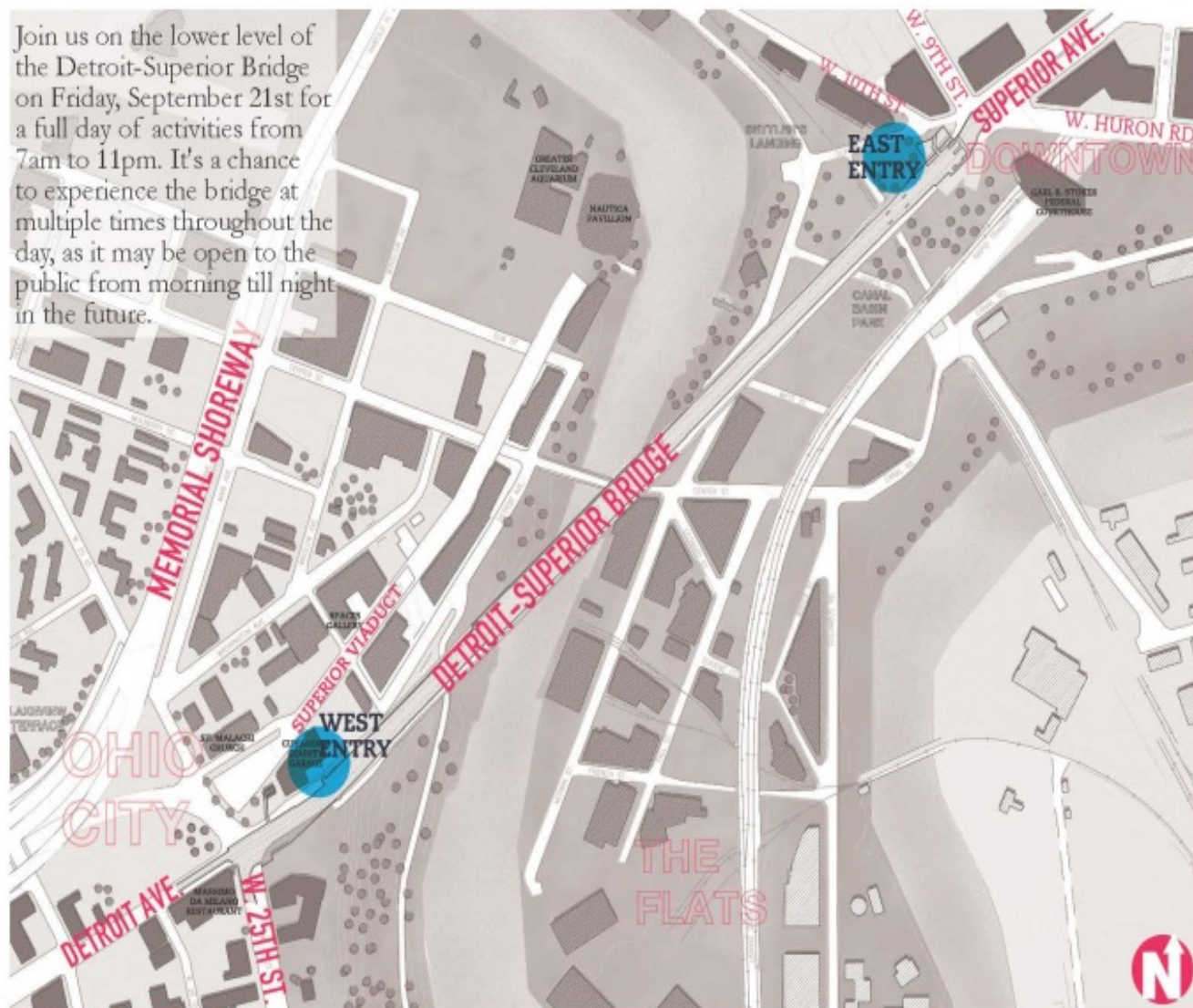
DETROIT SUPERIOR BRIDGE Cleveland, on-going



# DETROIT-SUPERIOR MIDWAY

SEPT. 21 ALL-DAY EVENT! 7AM-11PM

Join us on the lower level of the Detroit-Superior Bridge on Friday, September 21st for a full day of activities from 7am to 11pm. It's a chance to experience the bridge at multiple times throughout the day, as it may be open to the public from morning till night in the future.



## GETTING TO THE BRIDGE:

The lower level of the bridge will be accessible from two points. The primary entrance will be located at the west end of the bridge, adjacent to the county engineer's office. Entry will also be available at the east end of the bridge near the intersection of Superior Avenue and W. 10th St. On street parking is available, although alternative modes of transportation are certainly encouraged.

## FROM THE WEST:

**I-90:** Exit at W. 25th, turn left and continue on W. 25th St. to the bridge and continue north to the County Engineer's building.  
**Shoreway:** Take the W.25th Exit and continue straight until the County Engineer's office.

## FROM THE EAST:

**I-90:** Take exit 171 for Abbey Ave toward W. 14th St. Turn left on Abbey Rd. Turn left onto Gehring Ave and right onto W. 25th St. Continue north to the County Engineer's building.  
**Shoreway:** Exit at W. 28th St. Turn left onto W. 28th St. Turn left onto Detroit Ave. Turn Left onto W. 25th St. and immediately turn right onto the Superior Viaduct.

For more information, please visit:

BridgeProjectCleveland.com or friend the Bridge on Facebook by searching for "Cleveland Bridge"









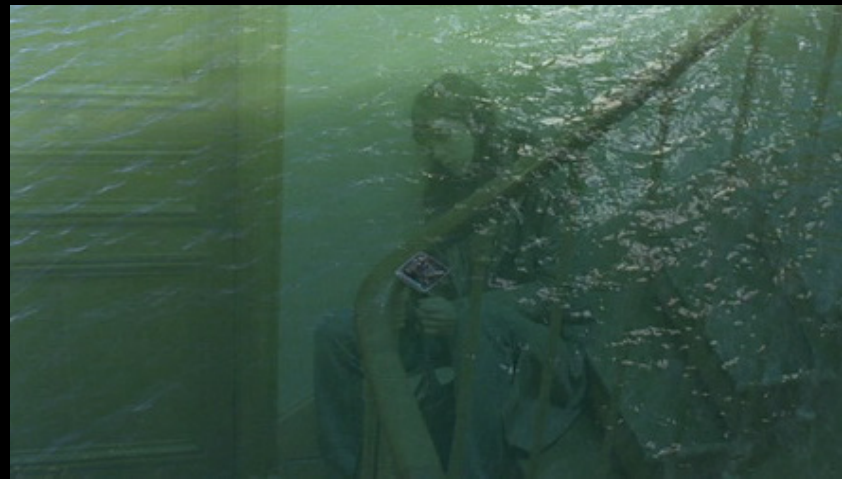
## Bike and Pedestrian path





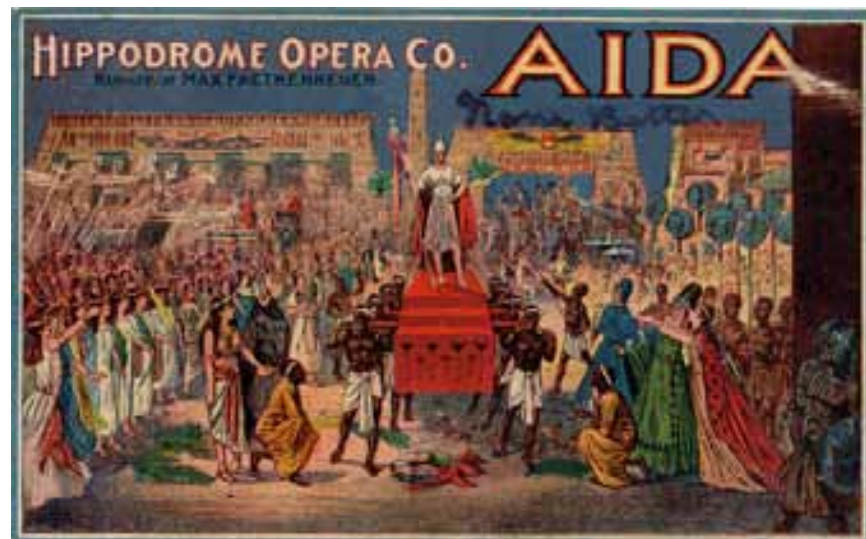


CROSS DISSOLVE  
The Science of Sleep (2006)














## HIPP DECK Prospect Ave & E. 9<sup>th</sup> Street




Did you ever feel parking decks were born for something more?





**SATURDAY, OCT. 8, 2011**  
**6:30-9:30PM**  
**740 EUCLID AVENUE**  
**\*FREE ADMISSION**

The Hipp Deck is a one-of-a-kind event that will transform the upper level of the 740 Euclid parking garage into an open-air live performance venue and public garden space for one unforgettable night. The parking garage is on the site of the former Hipp Theatre, a nationally renowned venue, demolished in 1981. The event will include live music performances, engaging art installations and a book release party for "Champion Street: The Art of the Hipp Theatre".







Proposal for Public Art & Preservation Project: "Elementary Mound Park" by Jorge Otero-Pailos,  
in association with the Cleveland Urban Design Collaborative.  
01. Existing abandoned Elementary School





Proposal for Public Art & Preservation Project: "Elementary Mound Park" by Jorge Otero-Pailos,  
in association with the Cleveland Urban Design Collaborative.  
02. Summer: Viewing Belvedere



Proposal for Public Art & Preservation Project: "Elementary Mound Park" by Jorge Otero-Pailos,  
in association with the Cleveland Urban Design Collaborative.  
03. Winter: Sledding Slope



Temporary Use Strategies  
Change | Time | Residue  
**Past Imperfect**



REPAIRED OBJECTS, “MAKE-DO’s”  
*Andrew Baseman*





*Rudi Meisel, Berlin*

**NEUES MUSEUM** Berlin  
*David Chipperfield with Julian Harrap*



**BAGRATI CATHEDRAL** Kutaisi, Georgia  
*Reconstruction*





DETROIT MICHIGAN 1950s “period of significance”



*Camillo Jose Vergara*

*Shane Gorski*





*Yves Marchand & Romain Meffre*



MICHIGAN CENTRAL STATION Detroit, Michigan





MYSTERIOUS MARINA Scranton Road



Ohio Canal Corridor



Benke & Associates

**STREAMBANK RESTORATION** Cleveland  
*Ohio Canal Corridor, Benke & Associates*





cleveland.com

**STREAMBANK RESTORATION** Cleveland  
*Ohio Canal Corridor, Benke & Associates*

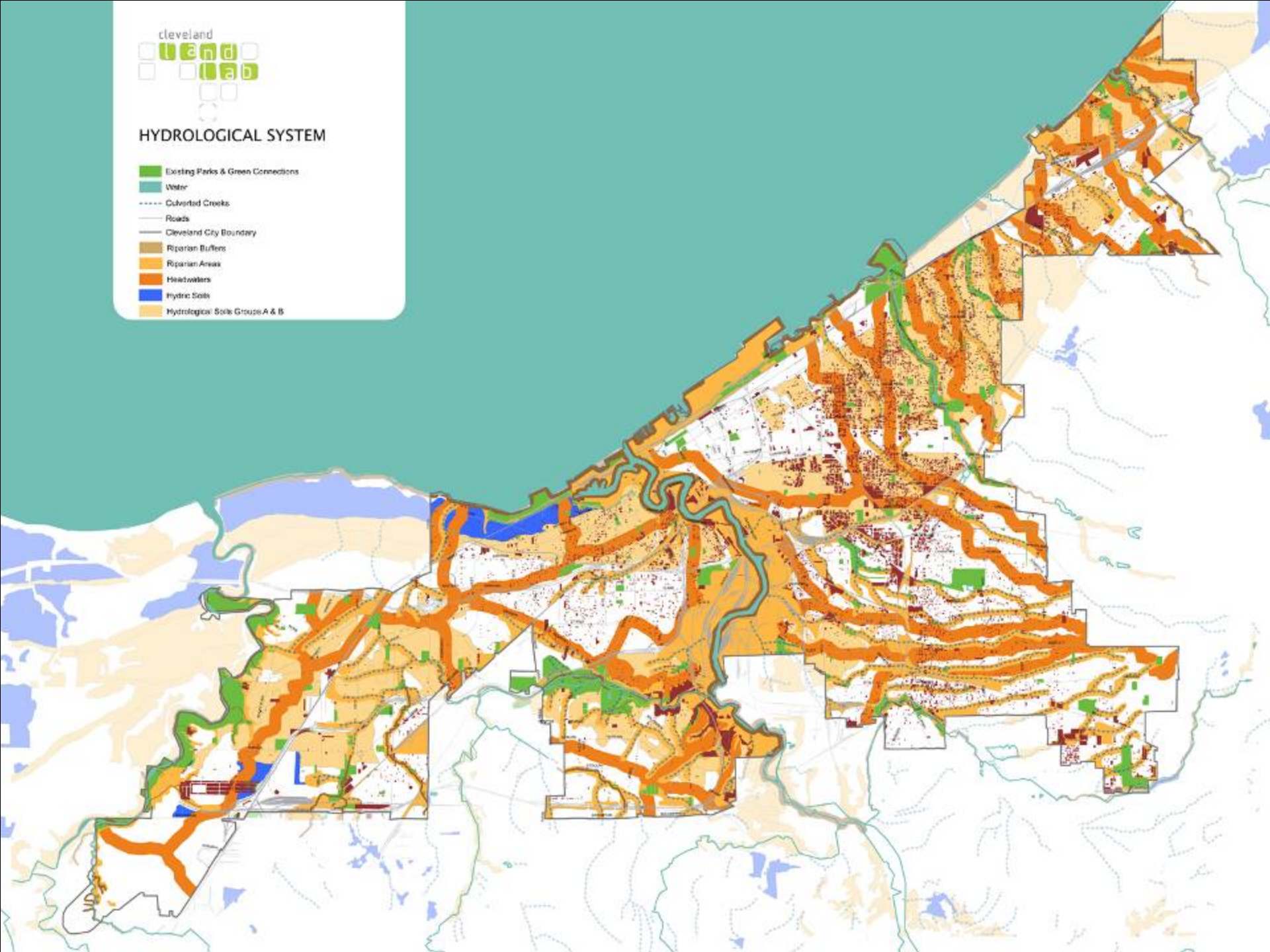


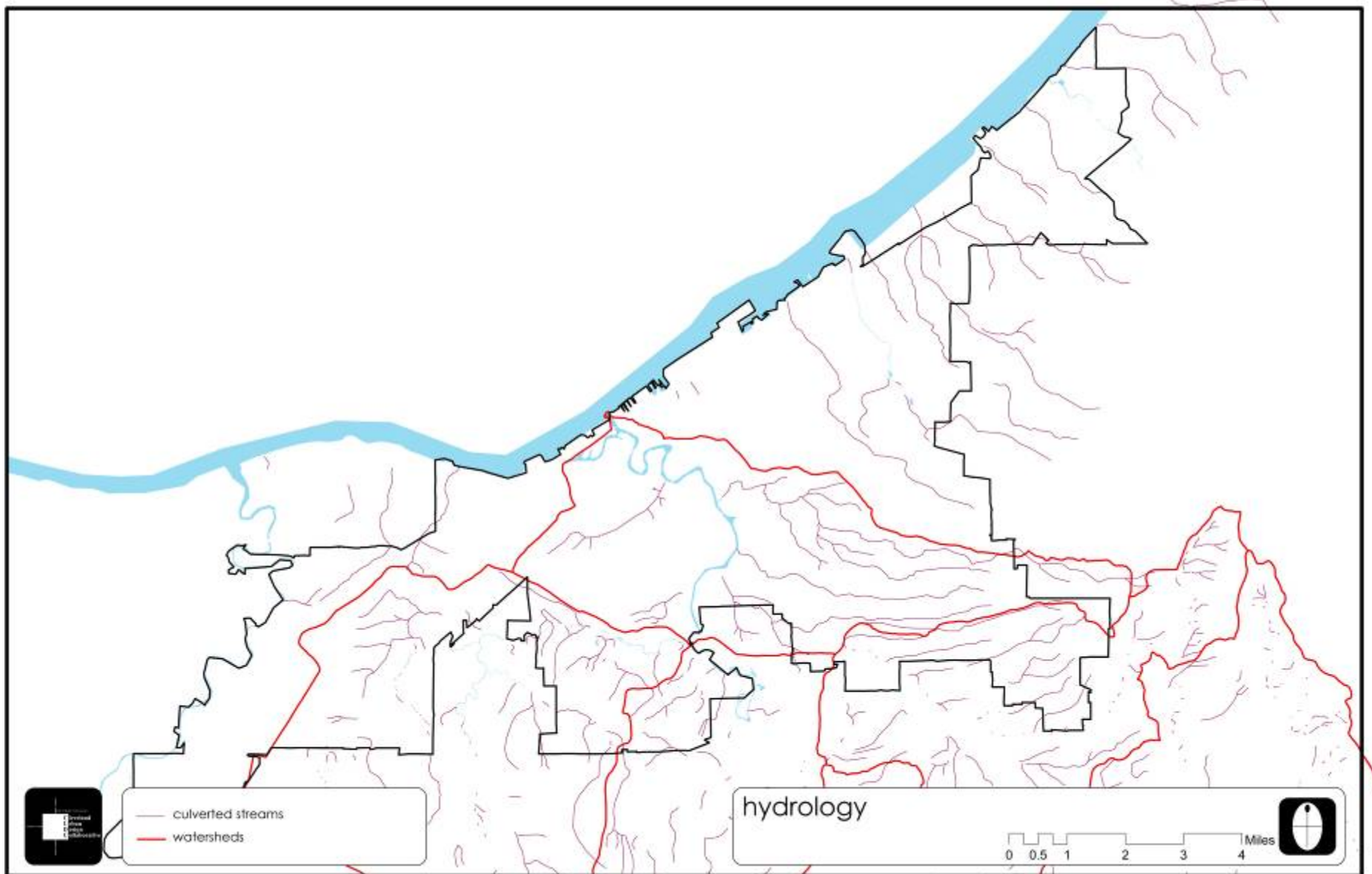




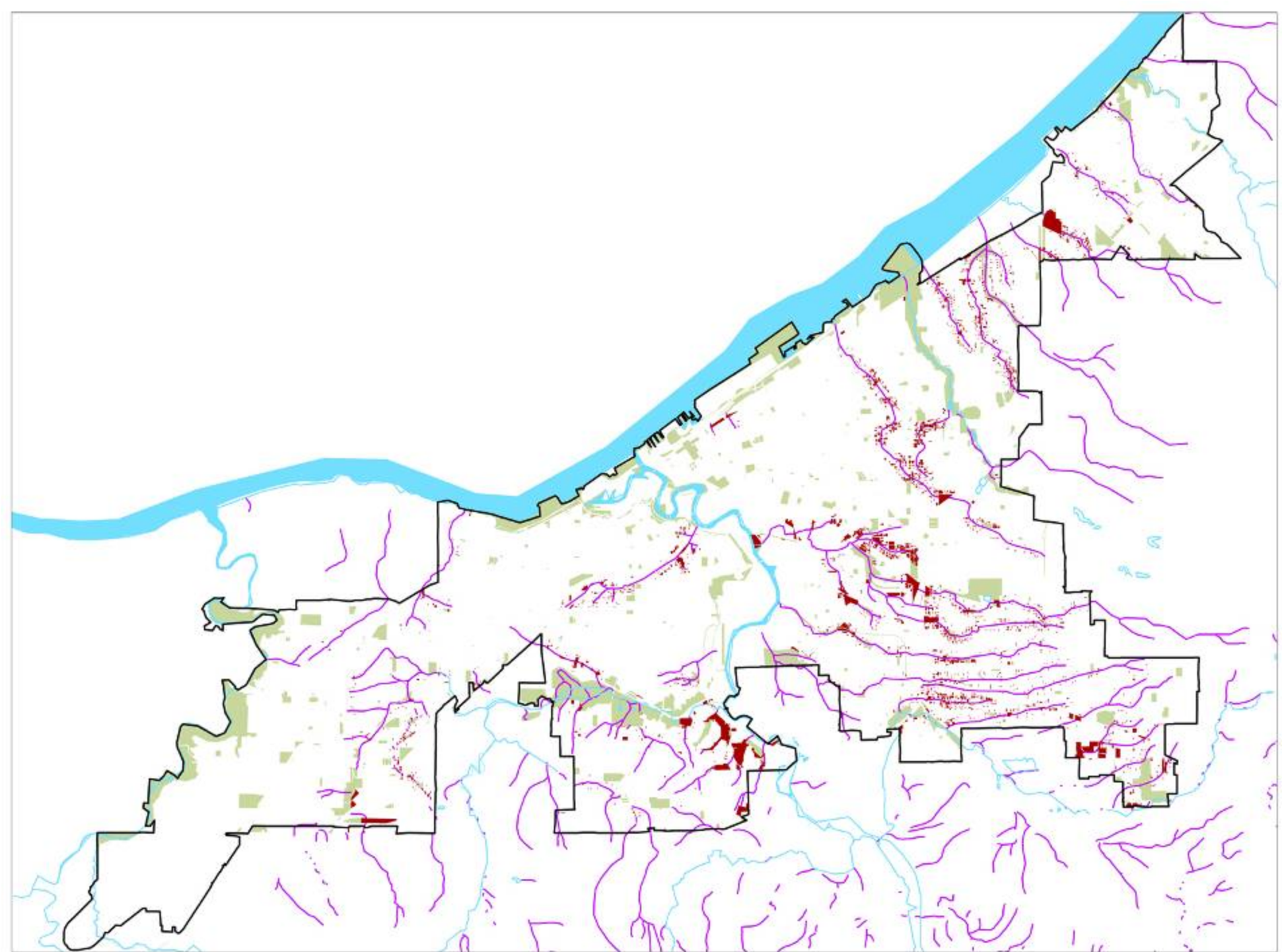
## HYDROLOGICAL SYSTEM

- Existing Parks & Green Connections
- Water
- Converted Crooks
- Roads
- Cleveland City Boundary
- Riparian Buffers
- Riparian Areas
- Headwaters
- Hydric Soils
- Hydrological Soils Groups A & B



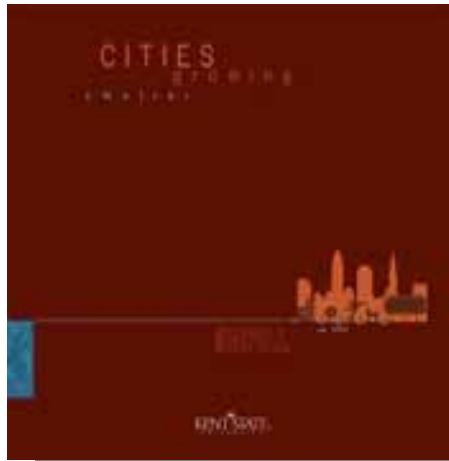












**Cleveland Urban Design Collaborative**  
1309 Euclid Avenue | [www.cudc.kent.edu](http://www.cudc.kent.edu)